

# **TENDER DOCUMENTS**

## **PROJECT:**

**CONSTRUCTION OF SPORTS COMPLEX AT  
BHIKKI POWER PLANT SHEIKHUPURA.**

## **CLIENT:**

**QUAID-E-AZAM THERMAL POWER LIMITED.**



## **CONSULTANT:**

**AZ ENGINEERING ASSOCIATES**



## **TABLE OF CONTENTS**

<b>Description</b>	<b>Page No.</b>
<b>INVITATION FOR BIDS</b>	<b>5</b>
<b>Invitation</b>	<b>6</b>
<b>INSTRUCTIONS TO BIDDERS</b>	<b>7</b>
<b>A. General</b>	
IB.1 Scope of Bid	<b>8</b>
IB.2 Source of Funds	<b>8</b>
IB.3 Eligible Bidders	<b>8</b>
IB.4 One Bid Per Bidder	<b>8</b>
IB.5 Cost of Bidding	<b>8</b>
IB.6 Site Visit	<b>9</b>
<b>B. Bidding Documents</b>	
IB.7 Contents of Bidding Documents	<b>9</b>
IB.8 Clarification of Bidding Documents	<b>9</b>
IB.9 Amendment of Bidding Documents	<b>10</b>
<b>C. Preparation of Bids</b>	
IB.10. Language of Bid	<b>10</b>
IB.11 Documents Accompanying the Bid	<b>10</b>
IB.12 Bid Prices	<b>12</b>
IB.13 Currencies of Bid and Payment	<b>12</b>
IB.14 Bid Validity	<b>13</b>
IB.15 Bid Security	<b>13</b>
IB.16 Alternate Proposals by Bidder	<b>14</b>
IB.17 Pre-Bid Meeting	<b>14</b>
IB.18 Format and Signing of Bid	<b>15</b>
<b>D. Submission of Bids</b>	
IB.19 Sealing and Marking of Bids	<b>15</b>
IB.20 Deadline for Submission of Bids	<b>16</b>
IB.21 Late Bids	<b>16</b>
IB.22 Modification, Substitution and Withdrawal of Bids	<b>17</b>
<b>E. Bid Opening and Evaluation</b>	

IB.23	Bid Opening	17
IB.24	Process to be Confidential	18
IB.25	Clarification of Bids	18
IB.26	Examination of Bids and Determination of Responsiveness	18
IB.27	Correction of Errors	19
IB.28	Evaluation and Comparison of Bids	19
<b>F.</b>	<b>Award of Contract</b>	
IB.29	Award	20
IB.30	Employer's Right to Accept any Bid and to Reject any or all Bids	20
IB.31	Notification of Award	21
IB.32	Performance Security	21
IB.33	Signing of Contract Agreement	21
IB.34	General Performance of the Bidders	22
IB.35	Integrity Pact	22
IB.36	Instructions Not Part of Contract	22
<b>BIDDING DATA</b>		<b>23 – 31</b>
<b>FORM OF BID AND APPENDICES TO BID</b>		<b>32</b>
<b>FORM OF BID</b>		<b>34</b>
Appendix-A to Bid	: Special Stipulations	35
Appendix-B to Bid	: Bill of Quantities	36
Appendix-C to Bid	: Proposed Construction Schedule	57
Appendix-D to Bid	: Method of Performing the Work	58
Appendix-E to Bid	: List of Major Equipment – Related Items	59
Appendix-F to Bid	: Construction Camp and Housing Facilities	61
Appendix-G to Bid	: List of Subcontractors	62
Appendix-H to Bid	: Estimated Progress Payments	63
Appendix-I to Bid	: Organization Chart of the Supervisory Staff and Labour	64
Appendix-J to Bid	: Integrity Pact	65
<b>FORMS</b>		
PERFORMANCE SECURITY		67
CONTRACT AGREEMENT		69

<b>PART-I: PARTICULAR CONDITIONS OF CONTRACT</b>	<b>71</b>
<b>SPECIFICATIONS - TECHNICAL PROVISIONS</b>	<b>90</b>
<b>DRAWINGS</b>	<b>91</b>

**INVITATION  
FOR  
BIDS**

**TENDER NOTICE**  
**for**  
**Construction of Sports Complex at Bhikki Power Plant Sheikhpura**

**Quaid e Azam Thermal Power Private Limited (QATPL)**

(Procurement No. 17-POWER PLANT-RLNG)

National Competitive

Bidding

Sealed Tenders are invited from Firms / Companies for Construction of Sports Complex at Bhikki Power Plant Sheikhpura. Tender (Bidding) Documents can be obtained from the office of QATPL, 1<sup>st</sup> Floor, 7-C-1, Gulberg III, Lahore during office hours from the date of publication of this Notice till 14<sup>th</sup> April, 2022 (Thursday) at 02:00 pm, on payment of Rs. 2,000/- (rupees one thousand only, Non-Refundable) on account of printing and provision of Tender (Bidding) Documents, in shape of Cash / Bank Draft in favour of "QATPL".

The Tenders / Bids must reach in the office of Manager Administration, QATPL, 1<sup>st</sup> Floor, 7-C-1, Gulberg III, Lahore before the closing date and time, i.e. 14<sup>th</sup> April, 2022 (Thursday) at 02:00 pm. The Technical Bids will be opened on the same date at 02:30 pm in Conference Room, QATPL, 1<sup>st</sup> Floor, 7-C-1, Gulberg III, Lahore, in the presence of the bidders who desire to attend. The financial bids of only technically qualified bidders will be opened on the date, time and venue communicated later. The detailed scope of work and ToR's are given in the Tender /Bidding Documents.

1. Bidding will be carried out by adopting "Single Stage Two Envelopes" procedure as per Clause-38(2)(a) of Punjab Procurement Rule-2014.
2. The bid shall be a single package consisting of two separate envelopes, containing separately marked as "Technical Bid" and "Financial Bid".
3. Incomplete bids or bids covering partial scope of work will be rejected.
4. The acceptance / rejection of bids shall be governed by Punjab Procurement Rules - 2014.
5. The applicant must be registered with Registrar of Firms or SECP.
6. The Bid should accompany Bid Security (refundable) of PKR 1,647,000 in the shape of CDR / Pay Order / Bank Draft / Bank Guarantee in favour of QATPL which is the 2% of the estimated cost i.e., PKR 82.350 million.
7. The bidder shall provide his, National Income Tax Number, Punjab Revenue Authority Registration, undertaking on judicial paper that the Contractor / Firm / Company has not been blacklisted or past record of terminated / incomplete works of similar nature, by any Government, Semi-Government, autonomous Body or Organization and Undertaking on judicial paper for adherence to timeline.

Late bids will be rejected and returned unopened to bidders. The Procuring Agency reserves the right to reject all bids at any time prior to the acceptance of a bid.

**GENERAL MANAGER ADMINISTRATION**

Quaid E Azam Thermal Power Private Limited

1st Floor, 7-C-1, Gulberg 3, Lahore

Phone:042-35750936-38,

e-mail: [gminhr@qathermal.com](mailto:gminhr@qathermal.com)

# **INSTRUCTIONS TO BIDDERS**

## INSTRUCTIONS TO BIDDERS

(Note: These Instructions to Bidders along with Bidding Data will not be part of the Contract and will cease to have effect once the contract is signed.)

### **A. GENERAL**

#### **IB.1 Scope of Bid**

- 1.1 The Employer as defined in the Bidding Data hereinafter called “the Employer” wishes to receive bids for the construction and completion of works as described in these Bidding Documents, and summarised in the Bidding Data hereinafter referred to as the “Works”.
- 1.2 The successful bidder will be expected to complete the Works within the time specified in Appendix-A to Bid.

#### **IB.2 Source of Funds**

- 2.1 The Employer has the budget available under its Corporate Social Responsibility head for the Construction of Sports Complex. All the payments will be made according to the ToRs defined in the bidding documents.

#### **IB.3 Eligible Bidders**

- 3.1 This Invitation for Bids is open to all bidders meeting following requirement:
  - Duly licensed by the Pakistan Engineering Council (PEC) in the category relevant to the value of the Works.

#### **IB.4 One Bid per Bidder**

- 4.1 Each bidder shall submit only one bid either by himself, or as a partner in a joint venture. A bidder who submits or participates in more than one bid (other than alternatives pursuant to Clause IB.16) will be disqualified.

#### **IB.5 Cost of Bidding**

- 5.1 The bidders shall bear all costs associated with the preparation and submission of their respective bids and the Employer will in no case be responsible or liable for those costs, regardless of the conduct or outcome of the bidding process.



**IB.6 Site Visit**

- 6.1 The bidders are advised to visit and examine the Site of Works and its surroundings and obtain for themselves on their own responsibility all information that may be necessary for preparing the bid and entering into a contract for construction of the Works. All cost in this respect shall be at the bidder's own expense.
- 6.2 The bidders and any of their personnel or agents will be granted permission by the Employer to enter upon his premises and lands for the purpose of such inspection, but only upon the express condition that the bidders, their personnel and agents, will release and indemnify the Employer, his personnel and agents from and against all liability in respect thereof and will be responsible for death or personal injury, loss of or damage to property and any other loss, damage, costs and expenses incurred as a result of such inspection.

**B. BIDDING DOCUMENTS****IB.7 Contents of Bidding Documents**

- 7.1 The Bidding Documents, in addition to invitation for bids, are those stated below and should be read in conjunction with any Addenda issued in accordance with Clause IB.9.
1. Instructions to Bidders.
  2. Bidding Data.
  3. General Conditions of Contract, Part-I (GCC).
  4. Particular Conditions of Contract, Part-II (PCC).
  5. Specifications - Technical Provisions.
  6. Form of Bid & Appendices to Bid.
  7. Bill of Quantities.
  8. Form of Contract Agreement.
  9. Forms of Performance Security.
  10. Drawings.
- 7.2 The bidders are expected to examine carefully the contents of all the above documents. Failure to comply with the requirements of bid submission will be at the Bidder's own risk. Pursuant to Clause IB.26, bids which are not substantially responsive to the requirements of the Bidding Documents will be rejected.

**IB.8 Clarification of Bidding Documents**

- 8.1 Any prospective bidder requiring any clarification (s) in respect of the Bidding Documents may notify the Employer in writing at the Employer's address indicated in the Invitation for Bids. The Employer will respond to any request for clarification which he receives earlier than 10 days prior to the deadline for submission of bids.

Copies of the Employer's response will be forwarded to all purchasers of the Bidding Documents, including a description of the enquiry but without identifying its source.

#### **IB.9 Amendment of Bidding Documents**

- 9.1 At any time prior to the deadline for submission of bids, the Employer may, for any reason, whether at his own initiative or in response to a clarification requested by a prospective bidder, modify the Bidding Documents by issuing addendum.
- 9.2 Any addendum thus issued shall be part of the Bidding Documents pursuant to Sub-Clause 7.1 hereof and shall be communicated in writing to all purchasers of the Bidding Documents. Prospective bidders shall acknowledge receipt of each addendum in writing to the Employer.
- 9.3 To afford prospective bidders reasonable time in which to take an addendum into account in preparing their bids, the Employer may extend the deadline for submission of bids in accordance with Clause IB.20

### **C. PREPARATION OF BIDS**

#### **IB.10 Language of Bid**

- 10.1 The bid and all correspondence and documents related to the bid exchanged by a bidder and the Employer shall be in the bid language stipulated in the Bidding Data and Particular Conditions of Contract. Supporting documents and printed literature furnished by the bidders may be in any other language provided the same are accompanied by an accurate translation of the relevant parts in the bid language, in which case, for purposes of evaluation of the bid, the translation in bid language shall prevail.

#### **IB.11 Documents Accompanying the Bid**

- 11.1 Each bidder shall:
  - (a) submit a written power of attorney authorizing the signatory of the bid to act for and on behalf of the bidder;
  - (b) update the information indicated and listed in the Bidding Data include the following :
    - (i) Evidence of access to financial resources alongwith average annual construction turnover;

- (ii) Financial predictions for the current year and the two following years including the effect of known commitments;
- (iii) Current Work commitments;
- (iv) Current litigation information; and
- (v) Availability of critical equipment.

and

- (c) furnish a technical proposal taking into account the various Appendices to Bid specially the following:

Appendix-C to Bid	Proposed Construction Schedule
Appendix-D to Bid	Method of Performing the Work
Appendix-E to Bid	List of Major Equipment
Appendix-F to Bid	Organization Chart for Supervisory Staff

11.2 Bids submitted by a joint venture of two (2) firms shall comply with the following requirements:

- (a) the bid and in case of a successful bid, the Form of Contract Agreement shall be signed so as to be legally binding on all partners;
- (b) one of the joint venture partners shall be nominated as being in charge; and this authorization shall be evidenced by submitting a power of attorney signed by legally authorized signatories of all the joint venture partners;
- (c) the partner-in-charge shall always be duly authorized to deal with the Employer regarding all matters related with and/or incidental to the execution of Works as per the terms and Conditions of Contract and in this regard to incur any and all liabilities, receive instructions, give binding undertakings and receive payments on behalf of the joint venture;
- (d) all partners of the joint venture shall at all times and under all circumstances be liable jointly and severally for the execution of the Contract in accordance with the Contract terms and a statement to this effect shall be included in the authorization mentioned under Sub-Para(b) above as well as in the Form of Bid and in the Form of Contract Agreement (in case of a successful bid); and
- (e) a copy of the agreement entered into by the joint venture partners shall be submitted with the bid stating the conditions under which it will function, its period of duration, the persons authorized to represent and obligate it and which persons will be directly responsible for due performance of the Contract and can give valid receipts on behalf of the joint venture, the proportionate participation of the several firms forming the joint venture, and any other information necessary to permit a full appraisal of its functioning. No amendments / modifications whatsoever in the joint venture agreement shall be agreed to between the joint venture partner without prior written consent of the Employer.

11.3 Bidders shall also submit proposals of work methods and schedule, in sufficient detail to demonstrate the adequacy of the Bidders' proposals to meet the technical specifications and the completion time referred to in Sub-Clause 1.2 hereof.

**IB.12 Bid Prices**

- 12.1 Unless stated otherwise in the Bidding Documents, the Contract shall be for the whole of the Works as described in Sub-Clause 1.1 hereof, based on the unit rates and / or prices submitted by the bidder.
- 12.2 The bidders shall fill in rates and prices for all items of the Works described in the Bill of Quantities. Items against which no rate or price is entered by a bidder will not be paid for by the Employer when executed and shall be deemed covered by rates and prices for other items in the Bill of Quantities.
- 12.3 All duties, taxes and other levies payable by the Contractor under the Contract, or for any other cause, as on the deadline for submission of bids shall be included in the rates and prices and the total Bid Price submitted by a bidder.

Additional / reduced duties, taxes and levies due to subsequent additions or changes in legislation shall be reimbursed / deducted.

**IB.13 Currencies of Bid and Payment**

- 13.1 The unit rates and the prices shall be quoted by the bidder entirely in Pak rupees. A bidder expecting to incur expenditures in other currencies for inputs to the Works supplied from outside the Employer's country (referred to as the "Foreign Currency Requirements") shall indicate the same in Appendix-B to Bid. The proportion of the Bid Price (excluding Provisional Sums) needed by him for the payment of such Foreign Currency Requirements either (i) entirely in the currency of the Bidder's home country or, (ii) at the bidder's option, entirely in Pak rupees provided always that a bidder expecting to incur expenditures in a currency or currencies other than those stated in (i) and (ii) above for a portion of the foreign currency requirements, and wishing to be paid accordingly, shall indicate the respective portions in his bid.
- 13.2 The rates of exchange to be used by the bidder for currency conversion shall be the TT&OD Selling Rates published or authorized by the State Bank of Pakistan prevailing on the deadline for submission of bids.

For the purpose of payments, the exchange rates used in bid preparation shall apply for the duration of the Contract.

#### **IB.14 Bid Validity**

- 14.1 Bids shall remain valid for the period stipulated in the Bidding Data after the Date of Bid Opening specified in Clause IB.23.
- 14.2 In exceptional circumstances, prior to expiry of the original bid validity period, the Employer may request that the bidders extend the period of validity for a specified additional period which shall in no case be more than the original bid validity period. The request and the responses thereto shall be made in writing. A bidder may refuse the request without forfeiting his Bid Security. A bidder agreeing to the request will not be required or permitted to modify his bid, but will be required to extend the validity of his Bid Security for the period of the extension, and in compliance with Clause IB.15 in all respects.

#### **IB.15 Bid Security**

- 15.1 Each bidder shall furnish, as part of his technical bid, a Bid Security in the amount stipulated in the Bidding Data in Pak Rupees.
- 15.2 The Bid Security shall be, at the option of the bidder, in the form of Deposit at Call or a Bank Guarantee issued by a Scheduled Bank in Pakistan.
- 15.3 Any bid not accompanied by an acceptable Bid Security shall be rejected by the Employer as non-responsive.
- 15.4 The bid securities of unsuccessful bidders will be returned as promptly as possible, but not later than 28 days after the expiration of the period of Bid Validity.
- 15.5 The Bid Security of the successful bidder will be returned when the bidder has furnished the required Performance Security and signed the Contract Agreement.
- 15.6 The Bid Security may be forfeited:
  - (a) if the bidder withdraws his bid except as provided in Sub-Clause 22.1;
  - (b) if the bidder does not accept the correction of his Bid Price pursuant to Sub-Clause 27.2 hereof; or

- (c) In the case of successful bidder, if he fails within the specified time limit to:
  - (i) furnish the required Performance Security; or
  - (ii) sign the Contract Agreement.

#### **IB.16 Alternate Proposals by Bidder**

- 16.1 Should any bidder consider that he can offer any advantages to the Employer by a modification to the designs, specifications or other conditions, he may, in addition to his bid to be submitted in strict compliance with the Bidding Documents, submit any Alternate Proposal(s) containing (a) relevant design calculations; (b) technical specifications; (c) proposed construction methodology; and (d) any other relevant details / conditions, provided always that the total sum entered on the Form of Bid shall be that which represents complete compliance with the Bidding Documents.
- 16.2 Alternate Proposal(s), if any, of the lowest evaluated responsive bidder only may be considered by the Employer as the basis for the award of Contract to such bidder.

#### **IB.17 Pre-Bid Meeting**

- 17.1 The Employer may, on his own motion or at the request of any prospective bidder(s), hold a pre-bid meeting to clarify issues and to answer any questions on matters related to the Bidding Documents. The date, time and venue of pre-bid meeting, if convened, is as stipulated in the Bidding Data. All prospective bidders or their authorized representatives shall be invited to attend such a pre-bid meeting.
- 17.2 The bidders are requested to submit questions, if any, in writing so as to reach the Employer not later than ten (10) days before the deadline of submission of Bids.
- 17.3 Minutes of the pre-bid meeting, including the text of the questions raised and the replies given, will be transmitted without delay to all purchasers of the Bidding Documents. Any modification of the Bidding Documents listed in Sub-Clause 7.1 hereof which may become necessary as a result of the pre-bid meeting shall be made by the Employer exclusively through the issue of an Addendum pursuant to Clause IB.9 and not through the minutes of the pre-bid meeting.
- 17.4 Absence at the pre-bid meeting will not be a cause for disqualification of a bidder.

**IB.18 Format and Signing of Bid**

- 18.1 Bidders are particularly directed that the amount entered on the Form of Bid shall be for performing the Contract strictly in accordance with the Bidding Documents.
- 18.2 All appendices to Bid are to be properly completed and signed.
- 18.3 No alteration is to be made in the Form of Bid nor in the Appendices thereto except in filling up the blanks as directed. If any such alterations be made or if these instructions be not fully complied with, the bid may be rejected.
- 18.4 Each bidder shall prepare by filling out the forms completely and without alterations one (1) original and (2) two number of copies, specified in the Bidding Data, of the documents comprising the bid as described in Clause IB.7 and clearly mark them "ORIGINAL" and "COPY" as appropriate. In the event of discrepancy between them, the original shall prevail.
- 18.5 The original and all copies of the bid shall be typed or written in indelible ink (in the case of copies, Photostats are also acceptable) and shall be signed by a person or persons duly authorized to sign on behalf of the bidder pursuant to Sub- Clause 11.1(a) hereof. All pages of the bid shall be initialled and stamped by the person or persons signing the bid.
- 18.6 The bid shall contain no alterations, omissions or additions, except to comply with instructions issued by the Employer, or as are necessary to correct errors made by the bidder, in which case such corrections shall be initialled by the person or persons signing the bid.
- 18.7 Bidders shall indicate in the space provided in the Form of Bid their full and proper addresses at which notices may be legally served on them and to which all correspondence in connection with their bids and the Contract is to be sent.
- 18.8 Bidders should retain a copy of the Bidding Documents as their file copy.

**D. SUBMISSION OF BIDS****IB.19 Sealing and Marking of Bids**

- 19.1 Each bidder shall submit his bid as under:
  - (a) ORIGINAL and each copy of the Bid shall be separately sealed and put in separate envelopes and marked as such.
  - (b) The envelopes containing the ORIGINAL and copies will be put in one sealed envelope and addressed / identified as given in Sub- Clause 19.2 hereof.

19.2 The inner and outer envelopes shall:

- (a) be addressed to the Employer at the address provided in the Bidding Data;
- (b) bear the name and identification number of the contract as defined in the Bidding Data; and
- (c) provide a warning not to open before the time and date for bid opening, as specified in the Bidding Data.

19.3 In addition to the identification required in Sub- Clause 19.2 hereof, the inner envelope shall indicate the name and address of the bidder to enable the bid to be returned unopened in case it is declared “late” pursuant to Clause IB.21

19.4 If the outer envelope is not sealed and marked as above, the Employer will assume no responsibility for the misplacement or premature opening of the Bid.

#### **IB.20 Deadline for Submission of Bids**

- 20.1 (a) Bids must be received by the Employer at the address specified no later than the time and date stipulated in the Bidding Data.
  - (b) Bids with charges payable will not be accepted, nor will arrangements be undertaken to collect the bids from any delivery point other than that specified above. Bidders shall bear all expenses incurred in the preparation and delivery of bids. No claims will be entertained for refund of such expenses.
  - (c) Where delivery of a bid is by mail and the bidder wishes to receive an acknowledgment of receipt of such bid, he shall make a request for such acknowledgment in a separate letter attached to but not included in the sealed bid package.
  - (d) Upon request, acknowledgment of receipt of bids will be provided to those making delivery in person or by messenger.
- 20.2 The Employer may, at his discretion, extend the deadline for submission of bids by issuing an amendment in accordance with Clause IB.9, in which case all rights and obligations of the Employer and the bidders previously subject to the original deadline will thereafter be subject to the deadline as extended.

#### **IB.21 Late Bids**

- 21.1 (a) Any bid received by the Employer after the deadline for submission of bids prescribed in Clause IB.20 will be returned unopened to such bidder.



- (b) Delays in the mail, delays of person in transit, or delivery of a bid to the wrong office shall not be accepted as an excuse for failure to deliver a bid at the proper place and time. It shall be the bidder's responsibility to determine the manner in which timely delivery of his bid will be accomplished either in person, by messenger or by mail.

**IB.22 Modification, Substitution and Withdrawal of Bids**

- 22.1 Any bidder may modify, substitute or withdraw his bid after bid submission provided that the modification, substitution or written notice of withdrawal is received by the Employer prior to the deadline for submission of bids.
- 22.2 The modification, substitution, or notice for withdrawal of any bid shall be prepared, sealed, marked and delivered in accordance with the provisions of Clause IB.19 with the outer and inner envelopes additionally marked "MODIFICATION", "SUBSTITUTION" or "WITHDRAWAL" as appropriate.
- 22.3 No bid may be modified by a bidder after the deadline for submission of bids except in accordance with Sub-Clauses 22.1 and 27.2.
- 22.4 Withdrawal of a bid during the interval between the deadline for submission of bids and the expiration of the period of bid validity specified in the Form of Bid may result in forfeiture of the Bid Security in pursuance to Clause IB.15.

**E. BID OPENING AND EVALUATION**

**IB.23 Bid Opening**

- 23.1 The Employer will open the bids, including withdrawals, substitution and modifications made pursuant to Clause IB.22, in the presence of bidders' representatives who choose to attend, at the time, date and location stipulated in the Bidding Data. The bidders' representatives who are present shall sign a register evidencing their attendance.
- 23.2 Envelopes marked "MODIFICATION", "SUBSTITUTION" or "WITHDRAWAL" shall be opened and read out first. Bids for which an acceptable notice of withdrawal has been submitted pursuant to Clause IB.22 shall not be opened.
- 23.3 The bidder's name, total Bid Price and price of any Alternate Proposal(s), any discounts, bid modifications, substitution and withdrawals, the presence or absence of Bid Security, and such other details as the Employer may consider appropriate, will be announced by the Employer at the opening of bids.

- 23.4 Employer shall prepare minutes of the bid opening, including the information disclosed to those present in accordance with the Sub-Clause 23.3.

#### **IB.24 Process to be Confidential**

- 24.1 Information relating to the examination, clarification, evaluation and comparison of bid and recommendations for the award of a contract shall not be disclosed to bidders or any other person not officially concerned with such process before the announcement of bid evaluation report which shall be done at least ten (10) days prior to issue of Letter of Acceptance. The announcement to all Bidders will include table(s) comprising read out prices, discounted prices, price adjustments made, final evaluated prices and recommendations against all the bids evaluated. Any effort by a bidder to influence the Employer's processing of bids or award decisions may result in the rejection of such bidder's bid. Whereas any bidder feeling aggrieved may lodge a written complaint not later than fifteen (15) days after the announcement of the bid evaluation report; however mere fact of lodging a complaint shall not warrant suspension of the procurement process.

#### **IB.25 Clarification of Bids**

- 25.1 To assist in the examination, evaluation and comparison of bids, the Employer may, at his discretion, ask any bidder for clarification of his bid, including breakdowns of unit rates. The request for clarification and the response shall be in writing but no change in the price or substance of the bid shall be sought, offered or permitted except as required to confirm the correction of arithmetic errors discovered by the Employer in the evaluation of the bids in accordance with Clause IB.28.

#### **IB.26 Examination of Bids and Determination of Responsiveness**

- 26.1 Prior to the detailed evaluation of bids, the Employer will determine whether each bid is substantially responsive to the requirements of the Bidding Documents.
- 26.2 A substantially responsive bid is one which (i) meets the eligibility criteria; (ii) has been properly signed; (iii) is accompanied by the required Bid Security; and (iv) conforms to all the terms, conditions and specifications of the Bidding Documents, without material deviation or reservation. A material deviation or reservation is one (i) which affect in any substantial way the scope, quality or performance of the Works; (ii) which limits in any substantial way, inconsistent with the Bidding Documents, the Employer's rights or the bidder's obligations under the Contract; or (iii) adoption/rectification whereof would affect unfairly the competitive position of other bidders presenting substantially responsive bids.

- 26.3 If a bid is not substantially responsive, it will be rejected by the Employer, and may not subsequently be made responsive by correction or withdrawal of the non-conforming deviation or reservation.

## **IB.27 Correction of Errors**

- 27.1 Bids determined to be substantially responsive will be checked by the Employer for any arithmetic errors. Errors will be corrected by the Employer as follows:
- (a) where there is a discrepancy between the amounts in figures and in words, the amount in words will govern; and
  - (b) where there is a discrepancy between the unit rate and the line item total resulting from multiplying the unit rate by the quantity, the unit rate as quoted will govern, unless in the opinion of the Employer there is an obviously gross misplacement of the decimal point in the unit rate, in which case the line item total as quoted will govern and the unit rate will be corrected.
- 27.2 The amount stated in the Form of Bid will be adjusted by the Employer in accordance with the above procedure for the correction of errors and with the concurrence of the bidder, shall be considered as binding upon the bidder. If the bidder does not accept the corrected Bid Price, his Bid will be rejected, and the Bid Security shall be forfeited in accordance with Sub- Clause 15.6(b) hereof.

## **IB.28 Evaluation and Comparison of Bids**

- 28.1 The Employer will evaluate and compare only the Bids determined to be substantially responsive in accordance with Clause IB.26.
- 28.2 In evaluating the Bids, the Employer will determine for each Bid the evaluated Bid Price by adjusting the Bid Price as follows:
- (a) making any correction for errors pursuant to Clause IB.27;
  - (b) excluding Provisional Sums and the provision, if any, for contingencies in the Summary Bill of Quantities, but including competitively priced Daywork; and
  - (c) making an appropriate adjustment for any other acceptable variation or deviation.
- 28.3 The estimated effect of the price adjustment provisions of the Conditions of Contract, applied over the period of execution of the Contract, shall not be taken into account in Bid evaluation.

- 28.4 If the Bid of the successful bidder is seriously unbalanced in relation to the Employer's estimate of the cost of work to be performed under the Contract, the Employer may require the bidder to produce detailed price analyses for any or all items of the Bill of Quantities to demonstrate the internal consistency of those prices with the construction methods and schedule proposed. After evaluation of the price analyses, the Employer may require that the amount of the Performance Security set forth in Clause IB.32 be increased at the expense of the successful bidder to a level sufficient to protect the Employer against financial loss in the event of default of the successful bidder under the Contract.

## **F. AWARD OF CONTRACT**

### **IB.29 Award**

- 29.1 Subject to Clauses IB.30 and IB.34, the Employer will award the Contract to the bidder whose bid has been determined to be substantially responsive to the Bidding Documents and who has offered the lowest evaluated Bid Price, provided that such bidder has been determined to be eligible in accordance with the provisions of Clause IB.3 and qualify pursuant to Sub-Clause IB 29.2.
- 29.2 The Employer, at any stage of the bid evaluation, having credible reasons for or *prima facie* evidence of any defect in supplier's or contractor's capacities, may require the suppliers or contractors to provide information concerning their professional, technical, financial, legal or managerial competence whether already pre-qualified or not:

Provided that such qualification shall only be laid down after recording reasons therefor in writing. They shall form part of the records of that bid evaluation report.

### **IB.30 Employer's Right to Accept any Bid and to Reject any or all Bids**

- 30.1 Notwithstanding Clause IB.29, the Employer reserves the right to accept or reject any Bid, and to annul the bidding process and reject all bids, at any time prior to award of Contract, without thereby incurring any liability to the affected bidders or any obligation except that the grounds for rejection of all bids shall upon request be communicated to any bidder who submitted a bid, without justification of grounds. Rejection of all bids shall be notified to all bidders promptly.

**IB.31 Notification of Award**

- 31.1 Prior to expiration of the period of bid validity prescribed by the Employer, the Employer will notify the successful bidder in writing (“Letter of Acceptance”) that his Bid has been accepted. This letter shall name the sum which the Employer will pay the Contractor in consideration of the execution and completion of the Works by the Contractor as prescribed by the Contract (hereinafter and in the Conditions of Contract called the “Contract Price”).
- 31.2 No Negotiation with the bidder having evaluated as lowest responsive or any other bidder shall be permitted, however, Employer may have clarification meetings to get clarify any item in the bid evaluation report.
- 31.3 The notification of award and its acceptance by the bidder will constitute the formation of the Contract, binding the Employer and the bidder till signing of the formal Contract Agreement.
- 31.3 Upon furnishing by the successful bidder of a Performance Security, the Employer will promptly notify the other bidders that their Bids have been unsuccessful and return their bid securities.

**IB.32 Performance Security**

- 32.1 The successful bidder shall furnish to the Employer a Performance Security in the form and the amount stipulated in the Bidding Data and the Conditions of Contract within a period of 10 days after the receipt of Letter of Acceptance.
- 32.2 Failure of the successful bidder to comply with the requirements of Sub-Clause IB.32.1 or Clauses IB.33 or IB.35 shall constitute sufficient grounds for the annulment of the award and forfeiture of the Bid Security.

**IB.33 Signing of Contract Agreement**

- 33.1 Within 07 days from the date of furnishing of acceptable Performance Security under the Conditions of Contract, the Employer will send the successful bidder the Contract Agreement in the form provided in the Bidding Documents, incorporating all agreements between the parties.
- 33.2 The formal Agreement between the Employer and the successful bidder shall be executed within 07 days of the receipt of the Contract Agreement by the successful bidder from the Employer.

**IB.34 General Performance of the Bidders**

The Employer reserves the right to obtain information regarding performance of the bidders on their previously awarded contracts/works. The Employer may in case of consistent poor performance of any Bidder as reported by the employers of the previously awarded contracts, interalia, reject his bid and/or refer the case to the Pakistan Engineering Council (PEC). Upon such reference, PEC in accordance with its rules, procedures and relevant laws of the land take such action as may be deemed appropriate under the circumstances of the case including black listing of such Bidder and debarring him from participation in future bidding for similar works.

**IB.35 Integrity Pact**

The Bidder shall sign and stamp the Integrity Pact provided at Appendix-J to Bid in the Bidding Documents for all Federal Government procurement contracts exceeding Rupees ten million. Failure to provide such Integrity Pact shall make the bidder non-responsive.

**IB.36 Instructions not Part of Contract**

Bids shall be prepared and submitted in accordance with these Instructions which are provided to assist bidders in preparing their bids, and do not constitute part of the Bid or the Contract Documents.

# **BIDDING DATA**

**BD-1**  
**BIDDING DATA**



## Bidding Data

### 1.1 Name and address of the Employer:

*Quaid-e-Azam Thermal Power (Pvt.) Limited.*

*1st Floor, 7-C-1, Gulberg III, Lahore.*

#### 1.1.1 Name of the Project & Summary of the Works:

*Construction of Sports Complex At Bhikki Power Plant Sheikhpura.*

### 2.1 Name of the Borrower/Source of Financing/Funding Agency:

*Quaid-e-Azam Thermal Power (Pvt.) Limited.*

### 2.1 Amount and type of financing: N/A

### 3.1 Time limit for clarification:

*Clarificaiotn may be requested not later than 10 days prior to submission deadline. The contact information for requesting clarification is 042-35750936-8*

### 4.1 Bid language:

*Proposal shall be submitted in English Language. All correspondence exchange shall be in English Language.*

#### 4.1(c) Furnish Technical Proposal (Mandatory):

- Undertaking on stamp paper of PKR 100 that applicant is not blacklisted, information provided are correct, bankruptcy, conflict of interest and there being no pending litigation.
- Power of attorney on a stamp paper for authorized signatory of proposal.
- Registration certificate with FBR, PRA and SECP/ Registrar of Firms.
- Registration with PEC in C-4 and above having CE10 and EE04.
- Audit statement and FBR Tax return last 3 years
- In case of JV/ Cosortium the memorandum of understanding on a stamp paper of PKR 1000 between the parties duly attested by Notary Public, should be in line with PEC Guide lines.
- Performance/ Completion certificates duly signed by the client.
- All pages of the biding document duly signed and stamped by the bidder and shall be returned with technical Proposal.

5.1 *Bidders to quote entirely in Pak. rupees*

6.1 Period of Bid Validity:

*Proposal must remain valid for 180 days*

7.1 Amount of Bid Security:

The Bid should accompany Bid Security (refundable) of PKR 1,647,000 in the shape of CDR / Pay Order / Bank Draft / Bank Guarantee in favour of QATPL which is the 2% of the estimated cost of project shall be furnished by the bidder and attached with Technical Proposal.

8.1 Venue, time, and date of the pre-Bid meeting:

N/A

9.1 Number of copies of the Bid to be completed and returned:

*Technical proposal 01 original 01 copy.*

*Financial proposal 01 original.*

9.2(a) Employer's address for the purpose of Bid submission:

Quaid-e-Azam Thermal Power Limited, 1<sup>st</sup> Floor, 7-C-1, Gulberg III, Lahore

10.1(a) Deadline for submission of bids:

Date and time, i.e. 14<sup>th</sup> April, 2022 (Thursday) at 02:00 pm.

11.1 Venue, time, and date of Bid opening:

Assistant Manager (Admin), QATPL, 1<sup>st</sup> Floor, 7-C-1, Gulberg III, Lahore.

Date and time, i.e. 14<sup>th</sup> April, 2022 (Thursday) at 02:00 pm. The Technical Bids will be opened on the same date at 02:30 pm in Conference Room, QATPL, 1<sup>st</sup> Floor, 7-C-1, Gulberg III, Lahore.

12.1 Standard form and amount of Performance Security acceptable to the Employer:

*Performance security @05% of the contract value in the form of Bank Guarantee by scheduled bank by State Bank of Pakistan.*

### 13.1 **SELECTION PROCEDURE:-**

The bidder shall be selected under the selection method of Least Cost Selection (LCS) according to Punjab Procurement Rules, 2014. The procedure for opening of proposals will follow the principles of P.E.C. and PPRA **Single stage – Two Envelope procedure**, which is presented as follows.

- The bid shall comprise a **single package** containing two separate envelopes. Each envelopes shall contain **separately the financial proposal** and the **technical proposal** and clearly marked as “**FINANCIAL PROPOSAL**” and “**TECHNICAL PROPOSAL**” in bold and legible letters to avoid confusion.
- Initially, only the envelope marked “**TECHNICAL PROPOSAL**” be opened and the envelope marked as “**FINANCIAL PROPOSAL**” shall be retained in the custody of the procuring agency without being opened.
- The procuring agency shall evaluate the technical proposal in a manner prescribed in the Bidding Documents.
- During the technical evaluation no amendments in the technical proposal shall be permitted. After the evaluation and approval for the Technical Proposal, the procuring agency, shall at a time within the bid validity period, publicly open the *FINANCIAL PROPOSALS* of the technically qualified firms at a time, date and venue announced and communicated to the bidders in advance for the attendance of their authorized representative duly notified in advance.

### 14.1 **The weightage given to the Technical & Financial proposals are:-**

**Technical:** Proposal passing the technical score of 70 & above shall be treated and evaluated on the basis of cost only. Less than 70 score in Technical Proposal bid will not entertained for Financial Proposal.

**Financial:** The selection will be made on the basis of lowest financial bid among the technically qualified bidders.

#### 14.1 EVALUATION CRITERIA:-

##### a) General Experience

Sr. No.	Description	Marks Assigned	Explanation for Marks Obtained
a)	Projects of similar nature and complexity completed in last ten years. Civil and Electrical Works	25	<ul style="list-style-type: none"> <li>25 Marks are given if the contractor has completed at least 3 projects of similar nature in last ten years.</li> <li>16 Marks for 2 projects completed during last ten years.</li> <li>No Mark is awarded for less than 02 Projects.</li> </ul>
b)	Projects of similar nature and complexity in-hand .  Civil and Electrical Works	10	<ul style="list-style-type: none"> <li>10 Marks are given if the contractor has 02 projects of similar nature in-hand.</li> <li>05 Marks for 01 Project in-hand</li> <li>No Mark is awarded for less than 01 Projects.</li> </ul>
<b>Total Marks Allocated</b>			<b>35</b>

##### b) Personnel Capabilities

Credit Marks will be awarded under this category using the following criteria:

Sr. No.	Description	Marks Assigned	Explanation for Marks Obtained
i)	B.Sc. Engineer registered with Pakistan Engineering Council (PEC)	9	<p><b><u>Experience (4.5-Marks for each Graduate Engineer) :</u></b></p> <ul style="list-style-type: none"> <li>4.5 Marks will be given if the individual experience of at least 1 No. B.Sc. Civil Engineer (professional) is equal to 07 years or above.</li> <li>1 No. Bsc Electrical. Engineer (professional) is equal to 05 years or above.</li> <li>No Mark will be given if the experience of Graduate Engineer is less than 07 years.</li> </ul> <p><b><u>Strength of Engineers (9 Marks)</u></b></p>

ii)	<p>Associates Engineers (DAE)</p> <p>Minimum requirement is 2 No. Associate Engineers – DAE comprising of 1 No. Civil, 1 No. Electrical (DAE in relevant technology).</p>	6	<p><b><u>Experience (3-Marks for each Associate Engineer) :</u></b></p> <ul style="list-style-type: none"> <li>3 Marks will be awarded for each Associate Engineer (DAE) if the individual experience of at least 2 No. Associate Engineers is 08 years or above.</li> <li>No Mark is given if the individual experience is less than 08 years.</li> </ul> <p><b><u>Strength of Associate Engineers (6 Marks).</u></b></p>
<b>Total Marks Allocated</b>			<b>15</b>

c). **Equipment Capability**

Critical equipment required for the Project is listed below:

Sr. No.	Description	Marks Assigned	Explanation for Marks Obtained
	<b><u>Equipment &amp; Machinery</u></b>		
1	Survey Equipment 2 Sets	02	<ul style="list-style-type: none"> <li>Full Marks for each equipment are given if the Contractor meets the prescribed requirements for each item.</li> <li>If the available quantity of each equipment is more than the minimum equipment requirement, full marks will be given.</li> </ul>
2	Dumper Trucks /Tractor Trolley 01 No with copy of Registration of Tractor/Dumper and owner name as proof.	02	
3	Steel cutting & Bending Machine 1 No.	02	
4	Generator 1 No	01	
	Road Roller 1 No	01	
5	Welding Machine 1 No	01	
	<b><u>Minimum Essential Requirement:</u></b>		
6	Equipment Lift 01 No.	02	
9	<p>i) Concrete Mixer 1 Bags capacity - 2 Points</p> <p>ii) Concrete Mixer 2 Bag Capacity- 4 Points</p> <p>iii) Vibrators 03 No. - 3 Points</p> <p>Total Marks = 2+4+3 = 09 Marks</p>	09	<ul style="list-style-type: none"> <li>Total Marks :</li> </ul>
<b>Total Marks Allocated</b>			<b>20</b>

d) **Financial Soundness**

- For Financial Status assessment, the Applicants may be required to submit **Audited Financial Statements** for the last three years or any other document which verifies their Financial Status.
- Credit marks shall be awarded on the basis of following criteria:

Sr. No.	Description	Marks Assigned	Criteria for Marks Obtained
a)	Available Bank Credit Line (Proof to be attached which can be subject to verification from Bank)	10	<ul style="list-style-type: none"> <li>• Full marks are given if the available bank credit line limit is equal to 20 Million or above.</li> <li>• 07 Marks for 15 Million to 19.99 bank credit line limit.</li> <li>• 4 Marks for credit limit falling between 05 M to 14.99 M proportionate marks will be given.</li> <li>• No Mark is given if available bank credit line limit is less than 4.99 Million.</li> </ul>
b)	Annual Turnover and Annual Audit Report of last 3 years duly certified by the Chartered Accountant is Compulsory.	10	<ul style="list-style-type: none"> <li>• Full marks are given if Turnover for last three years is equal to 50 Million.</li> <li>• 07 Marks for if the available average Turnover for last three years is equal to 35 to 50 Million</li> <li>• If average Turnover for last three years falls between 20 M to 35 M proportionate marks will be given.</li> <li>• No Mark shall be given if working capital is less than 20 Million.</li> </ul>
c)	<p><b>Bid Capacity:</b></p> <p><b>Net Bid Capacity</b> = Available Capital – 20% of the cost of all balance works in hand.</p> <p><b>Available Capital</b> = Available Bank Credit Line + Average Working Capital of last three years as per Annual Audit Report.</p> <p><i>Note : Cost of balance works in hand should be attached</i></p>	10	<ul style="list-style-type: none"> <li>• Full marks shall be given if the <b>Bid Capacity</b> is Rs. 50.0 Million or more.</li> <li>• 7 Marks shall be given if the net <b>Bid Capacity</b> is equal to Rs 30.0 Million to 50 Million</li> <li>• 4 Marks shall be given if the net <b>Bid Capacity</b> is equal to Rs 20.0 Million to 30 million.</li> <li>• For <b>Bid Capacity</b> less than Rs 20.0 Million no mark shall be given.</li> </ul>

<b>Total Marks Allocated</b>			<b>30</b>

- \* For completed projects completion certificate Or Contract Agreement of respective project is mandatory. No marks shall be awarded if completion certificate or contract agreement of respective project is not attached.
- \*\* Proposal passing the technical score of 70 & above shall be treated and evaluated on the basis of cost only. Less than 70 score in Technical Proposal bid will not entertained for Financial Proposal.
- \*\*\* The selection will be made on the basis of lowest financial bid among the technically qualified bidders.

**FORM OF BID  
AND  
APPENDICES TO BID**



**FORM OF BID**

Bid Reference No. \_\_\_\_\_  
(Name of Contract/Works)

To:

\_\_\_\_\_  
\_\_\_\_\_  
\_\_\_\_\_

Gentleman,

1. Having examined the Bidding Documents including Instructions to Bidders, Bidding Data, Conditions of Contract. Specifications, Drawings and Bill of Quantities and Addenda Nos. \_\_\_\_\_ for the execution of the above-named Works, we, the undersigned, offer to execute and complete such Works and remedy any defects therein in conformity with the Conditions of Contract. Specifications, Drawings, Bill of Quantities and Addenda for the sum of Rs. \_\_\_\_\_ (Rupees \_\_\_\_\_) or such other sum as may be ascertained in accordance with the said conditions.
2. We understand that all the Appendices attached hereto form part of this Bid.
3. As security for due performance of the undertakings and obligations of this Bid, we submit herewith a Bid Security in the amount of Rupees \_\_\_\_\_ (Rs. \_\_\_\_\_) drawn in your favour or made payable to you and valid for a period of \_\_\_\_\_ days beginning from the date Bids are opened.
4. We undertake, if our Bid is accepted, to commence the Works and to complete the whole of the Works comprised in the Contract within the time stated in Appendix-A to Bid.
5. We agree to abide by this Bid for the period of \_\_\_\_\_ days from the date fixed for receiving the same and it shall remain binding upon us and may be accepted at any time before the expiration of that period.
6. Unless and until a formal Agreement is prepared and executed, this Bid, together with your written acceptance thereof, shall constitute a binding contract between us.
7. We do hereby declare that the Bid is made without any collusion, comparison of figures or arrangement with any other bidder for the Works.

8. We understand that you are not bound to accept the lowest or any Bid you may receive.

Dated this \_\_\_\_\_ day of \_\_\_\_\_ 20\_\_\_\_\_

Signature: \_\_\_\_\_

in the capacity of \_\_\_\_\_ duly authorized to sign Bids for and on behalf of

\_\_\_\_\_  
(Name of Bidder in Block Capitals)  
(Seal)

Address: \_\_\_\_\_  
\_\_\_\_\_  
\_\_\_\_\_

Witness:

Signature: \_\_\_\_\_

Name: \_\_\_\_\_

Address. \_\_\_\_\_  
\_\_\_\_\_

Occupation \_\_\_\_\_

**SPECIAL STIPULATIONS**

**Clause**

**Conditions of Contract**

1.	Engineer's Authority to issue Variation in emergency	2.1	2% of the Contract Price stated in the Letter of Acceptance.
2.	Amount of Performance Security	10.1	05% of Contract Price stated in the Letter of Acceptance.
3.	Time for Furnishing Programme	14.1	Within 10 days from the date of receipt of Letter of Acceptance.
5.	Time for Commencement	41.1	Within 07 days from the date of receipt of Engineer's Notice to Commence which shall be issued within fourteen (07) days after signing of Contract Agreement.
6.	Time for Completion	43.1, 48.2	150 days from the date of receipt of Engineer's Notice to Commence.
7.	Amount of Liquidated Damages	47.1	0.1% for each day of delay in completion of the Works subject to a maximum of 10% of Contract Price stated in the Letter of Acceptance.
8.	Defects Liability Period	49.1	365 days from the effective date of Taking Over Certificate.
9.	Percentage of Retention Money	60.2	10 % of the amount of Interim Payment Certificate.
10.	Time of Payment from delivery of Engineer's Interim Payment Certificate to the Employer.	60.10	28 days in case of local currency

**BILL OF QUANTITIES****A. Preamble**

1. The Bill of Quantities shall be read in conjunction with the Conditions of Contract, Specifications and Drawings.
2. The quantities given in the Bill of Quantities are estimated and provisional, and are given to provide a common basis for bidding. The basis of payment will be the actual quantities of work executed and measured by the Contractor and verified by the Engineer and valued at the rates and prices entered in the priced Bill of Quantities, where applicable, and otherwise at such rates and prices as the Engineer may fix as per the Contract.
3. The rates and prices entered in the priced Bill of Quantities shall, except insofar as it is otherwise provided under the Contract include all costs of Contractor's plant, labour, supervision, materials, execution, insurance, profit, taxes and duties, together with all general risks, liabilities and obligations set out or implied in the Contract. Furthermore all duties, taxes and other levies payable by the Contractor under the Contract, or for any other cause, as on the date 28 days prior to deadline for submission of Bids, shall be included in the rates and prices and the total Bid Price submitted by the Bidder.
4. A rate or price shall be entered against each item in the priced Bill of Quantities, whether quantities are stated or not. The cost of items against which the Contractor will have failed to enter a rate or price shall be deemed to be covered by other rates and prices entered in the Bill of Quantities.
5. The whole cost of complying with the provisions of the Contract shall be included in the items provided in the priced Bill of Quantities, and where no items are provided, the cost shall be deemed to be distributed among the rates and prices entered for the related items of the Works.
6. General directions and description of work and materials are not necessarily repeated nor summarised in the Bill of Quantities. References to the relevant sections of the Bidding Documents shall be made before entering prices against each item in the priced Bill of Quantities.
7. Provisional sums included and so designated in the Bill of Quantities shall be expended in whole or in part at the direction and discretion of the Engineer in accordance with Sub-Clause 58.2 of Part I, General Conditions of Contract.

## BILL OF QUANTITIES

Sr. No.	Description of items	Qty	Unit	Rate Quoted by the Contractor	
				Rate	Amount
	<b>BADMINTON COURT</b>				
1	Excavation in foundation of building, bridges and other structure, i/c dag belling, dressing, refilling around structure with excavated earth, watering and ramming lead upto one chain and lift upto 5' in ordinary soil	1272	P.Cft		
2	Compaction of earthwork (soft, ordinary or hard soil) :- Compaction by rolling with roller ordinary soil	564	P.Cft		
3	P/F 6" layer over compacted earthen bed stone aggregate 1½" to 2" size compacted (As per drawing BM-A-03).	855	P.Cft		
4	Cement concrete plain i/c placing, compacting ,finishing and curing complete including screening and washing of stone aggregate 1:4:8 (4" layer over compacted stone aggregate (As per drawing BM-A-03).	564	P.Cft		
5	Cement concrete plain i/c placing, compacting, finishing and curing complete including screening and washing of stone aggregate 1:2:4 (4" layer over bed of PCC 1:2:4 (As per drawing BM-A-03).	564	P.Cft		
6	Cement Concrete brick or Stone Ballast 1½" to 2" gauge in foundation and plinth (1:6:12)	177	P.Cft		
7	Pacca brick work in foundation and plinth in cement sand mortar (1:5) (As per drawing BM-A-03)	365	P.Cft		
8	Cement Plaster 1:4 upto 20' (6.00 m) height ½" (13 mm) thick	266	P.Sft		
9	Painting court marking, as per drawing No. BM-A-03 with thermoplastic paint (Strip size varies as 3" and 4").	342.00	P.Rft		
10	Filling, watering and ramming earth under floors:- with surplus earth from foundation, etc with compaction (As back fill along toe wall).	348	P.Cft		

Sr. No.	Description of items	Qty	Unit	Rate Quoted by the Contractor	
				Rate	Amount
11	Providing/ fixing Badminton parachute Net with poles with rachard of 2½" internal dia G.I pipe 5'-0" above floor level and 9" embedded on floor with PCC 1:2:4 (9"x9"x9") including painting of poles complete in all respect and as directed by the Engineer Incharge (As per drawing BM-A-04).	1	P.Job		
12	Clearance of site/ removing of all debries/ Melba etc.				
	<b>SOCCER GROUND</b>				
1	Supply and filling sweet earth/ Bhal of approved quality borrowed from outside including all lead and lift, including ramming, levelling, grading complete in all respect and as directed by the Engineer Incharge.	27000	P.Cft		
2	Providing and laying Fine Dacca Grass to be laid as carpet of 1'x1.5' or 1'x2' etc complete in all respect and as directed by the Engineer Incharge.	54000	P.Sft		
3	Providing/ Making and fixing football Goal of 24'x8' size of 4" internal dia M.S pipe 14-SWG main horizontal and vertical pipe and 2" internal dia 14-SWG cross pipe at back side horizontal and vertical at top and bottom including painting of poles/ bars etc as per drawing including net complete in all respect and as directed by the Engineer Incharge (As per drawing HG-A-13).	2	P.Job		
4	Providing and fixing shisham wood marking pegs 2" dia 1'-6" long as marked on drawing (As per drawing HG-A-12).	8	P.Job		
	<b>HOCKEY GROUND</b>				
1	Supply and filling sweet earth/ Bhal of approved quality borrowed from outside including all lead and lift, including ramming, levelling, grading complete in all respect and as directed by the Engineer Incharge.	27000	P.Cft		
2	Providing and laying Fine Dacca Grass to be laid as carpet of 1'x1.5' or 1'x2' etc complete in all respect and as directed by the Engineer Incharge.	54000	P.Sft		

Sr. No.	Description of items	Qty	Unit	Rate Quoted by the Contractor	
				Rate	Amount
3	Making and fixing of Hockey pole size 12'x7' fitted with main pipe 2" dia vertical and horizontal also cross pipes at backside including board of M.S sheet 16-SWG at bottom including painting and complete with parachute net at back and sides as per drawing complete in all respect and as directed by the Engineer Incharge (As per drawing HG-A-08).	2	P.Job		
4	Providing and fixing shisham wood marking wooden pegs 2" dia 1'-6" long as marked on drawing (As per drawing HG-A-07).	4	P.Job		
	<b>CRICKET GROUND</b>				
1	Earth Filling in Lawns.	3000	P.Sft		
2	Supply and filling sweet earth/ Bhal of approved quality borrowed from outside including all lead and lift, including ramming, levelling, grading complete in all respect and as directed by the Engineer Incharge.	239614	P.Sft		
3	Providing and laying Fine Dacca Grass to be laid as carpet of 1'x1.5' or 1'x2' etc complete in all respect and as directed by the Engineer Incharge.	239614	P.Sft		
4	<b>Construction of Five Nos. Cricket Pitch (Clay) (As per Drawing No. PP-A-11).</b>				
	Excavation in foundation of building, bridges and other structure, i/c dag belling, dressing, refilling around structure with excavated earth, watering and ramming lead upto one chain and lift upto 5' in ordinary soil.	5960	P.Cft		
	Spraying anti-termite liquid mixed with water in the ratio of 1:40.	8595	P.Sft		
	Providing and laying 4" thick sub-base course of stone product of approved quality and grade, including placing, mixing, spreading and compaction of sub-base material to required depth, camber, grade to achieve 95% to 100% maximum modified AASHO dry density, including carriage of all material to site of work including cost of all materials and carriage (PP-A-11)	1265	P.Cft		

Sr. No.	Description of items	Qty	Unit	Rate Quoted by the Contractor	
				Rate	Amount
	P/L crush / bajri 1/2" to 3/4" size from Sikhanwali Sargodha quarry 225-Km (2" thick) Ref: drawing PP-A-11	635	P.Cft		
	P/L chanab sand. (2" thick) As per drawing PP-A-11.	635	P.Cft		
	P/Filling clay from Nandi Pur 132-Km lead i/c compaction (6" thic layer) As per drawing PP-A-11.	1900	P.Cft		
	Compaction of earthwork with power road roller, including ploughing, mixing, moistening earth to optimum moisture content in layers, etc. complete 95% to 100% maximum modified AASHO dry density.	3155	P.Cft		
	Construction of water drain 15" wide 18" deep RCC 1:2:4 with M.S grating cover as per design/ drawing (As per drawing No. PH-01).	2294	P.Sft		
	<b>PRACTICE PITCHES (1-NO RCC &amp; 2-NO. CLAY) (As Per Drawing No. PP-A-10)</b>				
1	Excavation in foundation of building, bridges and other structures, including dagbelling, dressing, refilling around structure with excavated earth, watering and ramming lead upto one chain (30 m) and lift upto 5 ft. (1.5 m):- b) in ordinary soil	2726	P.Cft		
2	Termite proofing of building by spraying anti termite liquide with water Spray 1-liter chemical mixed 65-liter water spray over an area of 175-Sft using Biflex / Dursban or any other equivalent as approved by the Engineer incharge and certificate will be provided by the contractor for 10-years	3966	P.Sft		
3	Supplying and filling sand under floor; or plugging in wells (Drawing No. PP-A-10).	2100	P.Cft		
4	Cement Concrete brick or Stone Ballast 1½" to 2" gauge in foundation and plinth (1:6:12) (Toe wall on concrete pitch).	44	P.Cft		
5	Pacca brick work in foundation and plinth in:- i) Cement, sand mortar:- Ratio 1:5 (Toe wall (PP-A-10)	263	P.Cft		



Sr. No.	Description of items	Qty	Unit	Rate Quoted by the Contractor	
				Rate	Amount
6	Providing, laying, watering and ramming brick ballast 1½" to 2"(40 mm to 50 mm) gauge mixed with 25% sand, for floor foundation, complete in all respects (under concrete pitch Ref: drawing PP-A-10).	412	P.Cft		
7	Providing and laying 4" thick sub-base course of stone product of approved quality and grade, including placing, mixing, spreading and compaction of sub-base material to required depth, camber, grade to achieve 95% to 100% maximum modified AASHO dry density, including carriage of all material to site of work including cost of all materials and carriage.	533	P.Cft		
8	Providing and laying 2" thick crush / bajri 1/2" to 3/4" size from Sikhanwali Sargodha quarry under clay practice pitch (As per drawing No. PP-A-10).	267	P.Cft		
9	P/L local sand compacted under three pitches (As per drawing No. PP-A-10).	267	P.Cft		
10	Providing/ filling clay nandi Pur lead 132-KM i/c compaction.	450	P.Cft		
12	Reinforcement of cement concrete in slab of rafts/ strip foundation, base of column and retaining walls: etc and other structural members other than these mentioned in above not requiring from work (i. e horizontal shuttering) complete in all respect (1:1-1/2:3) (Top of concrete practice pitch) (As per drawing No. PP-A-10).	165	P.Cft		
13	Fabrication of mild steel reinforcement for cement concrete i/ c cutting, bending, laying, in position, making joints and fastening i/ c cost of binding wire and labour charges for binding of steel reinforcement (Also i/c removal of rust from bars)deformed bars. G-40 (In concrete for practice pitch (Drawing No. PP-A-10)	262	P.Kg		
14	Compaction of earthwork (soft, ordinary or hard soil) :- Compaction by rolling with roller ordinary soil	679	P.Cft		
15	Cement plaster 1:4 upto 20' (6.00 mm) height:- b) ½" (13 mm) thick	94	P.Sft		
16	Applying floating coat of cement 1/32" (0.8 mm) thick.	500	P.Sft		

Sr. No.	Description of items	Qty	Unit	Rate Quoted by the Contractor	
				Rate	Amount
17	Making and fixing frame with parachute net vertical on three side of each practice pitch frame and horizontally on top of each practice frame, with G.I pipe 3" internal dia 12' vertical 10' c/c above floor level 2'-0" in foundation of PCC 1:2:4 1'-6"x1'-6"x2'-0" size also same pipe horizontal and cross at 10' c/c both way including jointing with tee and welding complete with painting and covered frame with parachute net alongwith hooks and clips for fixing of net as per drawing (As per drawing No. PP-A-09).	1	P.Job		
	<b>PATHWAY</b>				
	<b>Bikes parking and Pathway</b>				
1	Earthwork in ordinary soil for embankments including all lead and lift, including ploughing and mixing with blade grade or disc harrow or other suitable equipment, and compaction by mechanical means at optimum moisture content and dressing to designed section, complete in all respects 90% to 95% maximum modified AASHO dry density (As per drawing No. PW-A-14)	14500	P.Cft		
2	Providing and laying 6" thick sub-base course of stone product of approved quality and grade, including placing, mixing, spreading and compaction of sub-base material to required depth, camber, grade to achieve 95% to 100% maximum modified AASHO dry density, including carriage of all material to site of work including cost of all material and carriage (As per drawing No. PW-A-14).	14500	P.Cft		
3	Providing and laying Tuff pavers, having 7000 PSI, crushing strength of approved manufacturer, over 2" to 3" sand cushion/ cgrouting with sand in joints i/c finishing to require slope complete in all respect. (50% Grey / 50% Coloured) 60mm	29000	P.Sft		
4	Providing/ laying concrete K-2 over bed of PCC 1:2:4 3" thick complete in all respect and as directed by the Engineer Incharge.	4000	P.Rft		
5	Construction of Brick masonry toe wall 9" thick in cement sand mortar ratio 1:5 (As per drawing No. PA-A-14) for bike parking area).	157	P.Rft		

Sr. No.	Description of items	Qty	Unit	Rate Quoted by the Contractor	
				Rate	Amount
	<b>HORTICULTURE/ LANDSCAPING</b>				
1	Supply and filling sweet earth/ Bhal of approved quality borrowed from outside including all lead and lift, including ramming, levelling, grading complete in all respect and as directed by the Engineer Incharge.	70165	P.Sft		
2	Providing and laying Fine Dacca Grass to be laid as carpet of larger or 2'x2' complete in all respect and as directed by the Engineer Incharge including watering and main fency the gran for three month.	140330	P.Sft		
	<b>PLANTATION</b>				
1	Providing and planting of 4' to 5' high Ulta Asoke at site including digging 3' deep pit of appropriate 2' dia for planting including the cost of sweet earth/ bhal mixed with manure at 10' c/c along the boundary wall complete in all respect and as directed by the Engineer Incharge. North west site and south west side	112	Each		
2	Providing and planting of Bogon Velia different colour 3' to 4' high including digging of 2' deep pit of 1'-6" including refilling with sweet earth/ bhal mixed with manure in between Ulta Ashoke along the boundary wall complete in all respect and as directed by the Engineer Incharge. North west site and south west side	110	Each		
3	Providing and planting of Ever Green Phonose Palm about 3' high at 15' c/c along with walkway including digging pit 1.5' dia 2' deep and refilling with sweet earth/ bhal mixed with manure complete in all respect and as directed by the Engineer Incharge.	25	Each		
4	Providing and planting of Ever Green Kange Palm (12" Gumla 1½' high) at 15' c/c along with walkway including digging pit 1.5' dia 2' deep and refilling with sweet earth/ bhal mixed with manure complete in all respect and as directed by the Engineer Incharge.	25	Each		

Sr. No.	Description of items	Qty	Unit	Rate Quoted by the Contractor	
				Rate	Amount
5	Providing and planting of Ever Green Phorcaria (12" Gumla 2' high) at 15' c/c along with walkway including digging pit 1.5' dia 2' deep and refilling with sweet earth/ bhal mixed with manure complete in all respect and as directed by the Engineer Incharge.	25	Each		
6	Providing and planting of Ever Large Estonia (12" Gumla 4' to 5' high) at 15' c/c along with walkway including digging pit 1.5' dia 2' deep and refilling with sweet earth/ bhal mixed with manure complete in all respect and as directed by the Engineer Incharge.	30	Each		
	<b>BASKETBALL COURT</b>				
1	Excavation in foundation of building, bridges and other structure, i/c dag belling, dressing, refilling around structure with excavated earth, watering and ramming lead upto one chain and lift upto 5' in ordinary soil	7234	P.Cft		
2	Compaction of earthwork (soft, ordinary or hard soil) :- Compaction by rolling with roller ordinary soil	5842	P.Cft		
3	Supplying and filling sand under floor; or plugging in wells (As per drawing No. BC-A-01).	2323	P.Cft		
4	4" thick Cement concrete plain i/c placing, compacting ,finishing and curing complete including screening and washing of stone aggregate 1:4:8 (As per drawing No. BC-A-01).	2323	P.Cft		
5	Reinforced cement concrete on floor of Tennis court complete in all respects:- (1: 1½: 3).	2323	P.Cft		
6	Fabrication of mild steel reinforcement for cement concrete, including cutting, bending, laying in position, making joints and fastenings, including cost of binding wire and labour charges for binding of steel reinforcement (also includes removal of rust from bars):- ('c) Deformed bars (Grade-40)	3691	P.Cft		
7	6" thick Cement Concrete brick or Stone Ballast 1½" to 2" gauge in foundation and plinth (1:6:12) (As per drawing No. BC-A-01)	348	P.Cft		

Sr. No.	Description of items	Qty	Unit	Rate Quoted by the Contractor	
				Rate	Amount
8	Pacca brick work in foundation and plinth in cement sand mortar (1:5) (As per drawing No. BC-A-01)	555	P.Cft		
9	Cement Plaster 1:4 upto 20' (6.00 m) height ½" (13 mm) thick	696	P.Sft		
10	Painting court marking, with thermoplastic paint as per drawing No. BC-A-01 (Marking can be 3" wide, 4" or 5").	660	P.Rft		
11	Filling, watering and ramming earth under floors:- with surplus earth from foundation, etc with compaction (As back fill along toe wall)..	708	P.Cft		
12	Providing/ fixing Basket ball pole 6 inch round pipe in 14 gauge with fiber glass board and ring and net pipe size is 6 inch in 14 gauge board size 3.5 ft by 6 ft with back supported pipe frame 1.5x1.5 inch pipe in 16 gauge and attached with iron sheet 16x16 inch in 12 gauge and backside 2 supported pipe of 1 inch in 16 gauge with complete nut, bolts and painting complete in all respect and as directed by the Engineer Incharge (As per drawing No. BC-A-02).	2	P.Job		
13	Clearance of site/ removing of all debries/ Melba etc.	1	P.Job		
	<b>Concrete Tennis Court Drawing No. TC-A-05 and TC-A-06</b>				
1	Excavation in foundation of building, bridges and other structure, i/c dag belling, dressing, refilling around structure with excavated earth, watering and ramming lead upto one chain and lift upto 5' in ordinary soil	7312	P.Cft		
2	Supplying and filling sand 4" thick under (As per drawing No. TC-A-05).	2000	P.Cft		
3	4" thick Cement concrete plain using crushed stone aggregate Ratio 1: 4: 8 (As per drawing No. TC-A-05)	2196	P.Cft		
4	Pacca brick work in foundation and plinth in cement sand mortar (1:5) (Toe wall of court) (As per drawing No. TC-A-05)	577	P.Cft		

Sr. No.	Description of items	Qty	Unit	Rate Quoted by the Contractor	
				Rate	Amount
5	Reinforced cement concrete on floor of Tennis court complete in all respects:- (1: 1½: 3) (Ref: Drawing No. TC-A-05)	1980	P.Cft		
6	Fabrication of mild steel reinforcement for cement concrete i/ c cutting, bending, laying, in position, making joints and fastening i/ c cost of binding wire and labour charges for binding of steel reinforcement (Also i/c removal of rust from bars)deformed bars. G-40	3146	P.Kg		
7	Providing and fixing G.I. wire fence 18' high consisting of 10 SWG (0.128") wire having opening of size 1.5" x 2.0", and 3.0" internal dia G.I. pipe vertical posts at 10.0' c/c and 3.0" internal dia G.I. pipes horizontally at 6' c/c, jointed using G.I. specials at top and welded joints at bottom including cost of binding wire, stretching the fence, cost of excavation, 6" lean concrete 1:4:8, PCC 1:2:4 base of size 1½'x1½'x2' for embedment complete in all respects and as directed by the Engineer Incharge (As per Drawing No. TC-A-06).	5760	P.Sft		
8	Providing/ fixing of parachute net on post with G.I Sq: pipe 16-SWG 4"x4" size 3'-6" alongwith rachard above floor level and 1'-6" embedded in PCC 1:2:4 (1x1x1.5) including painting pipe and 42'x3'-6" net of approved quality complete in all respect and as directed by the Engineer Incharge (As per Drawing No. TC-A-06).	2	Each		
9	Filling expansion joints with bitumen. sand & saw dust in ratio 1:2:2. (4" deep)	180	P.Rft		
10	Painting court marking with thermoplastic paint (As per drawing No. TC-A-05).	516	P.Rft		
11	Clearance of site/ removing of all debries/ Melba etc.	1	P.Job		
	<b>RAIN GUN IRRIGATION SYSTEM</b>				

Sr. No.	Description of items	Qty	Unit	Rate Quoted by the Contractor	
				Rate	Amount
1	Provision of water range Rain Gun imported 2" dia with nozzle HK-50 coupling system (3-No.), stand (3-No.), ground hydrant with HK-50 imported Bauer coupling system (15-No.), high pressure nylon reinforced flexible hose 2" dia complete (300-Rft) Irrigation flow control double union ball valve (3-No), heavy duty valve box (18-No.), water irrigation UPVC class-10 pipe 63mm dia (3460-Rft) & 90-mm dia (240-Rft) air release valve 2" dia (1-No.) pressure release valve 2" dia (1-No.), submersible pump with 3-phase motor 15-HP (1-Set) including transportation charges and installation charges complete as per attached quotation specification and quantities complete in all respect and as directed by the Engineer Incharge.	1	P.Job		
2	Installation of fully submersible pump (Power flow) with designed hydraulic Head and Discharge, with 3-phase Motor of 15-HP, 400 volts with motor control unit comprising of all safety relays, with 3-core electric cable (30-ft), non return valve (NRV-3") pressure gauge and will all required fittings complete in all respect and as directed by the Engineer Incharge. <b>(Spare Pump).</b>	1	Each		
	<b>UNDERGROUND WATER TANK 10000-GLNS CAPACITY FOR IRRIGATION SYSTEM</b>				
1	Excavation in foundation of building, bridges and other structure, i/c dag belling, dressing, refilling around structure with excavated earth, watering and ramming lead upto one chain and lift in ordinary soil				
i)	<b>2' at sides including work place</b>	2438	P.Cft		
ii)	<b>From 5' upto 10'</b>	2238	P.Cft		
2	Spraying anti termite liquid mixed with water in the ratio of (1:40).	1037	P.Sft		
3	Cement concrete plain i/c placing, compacting ,finishing and curing complete including screening and washing of stone aggregate 1:4:8.	110	P.Cft		

Sr. No.	Description of items	Qty	Unit	Rate Quoted by the Contractor	
				Rate	Amount
4	Reinforcement of cement concrete in slab of rafts/ strip foundation, base of column and retaining walls: etc and other structural members other than these mentioned in above not requiring from work (i. e horizontal shuttering) complete in all respect (1:1½:3).	253	P.Cft		
5	Reinforced cement concrete in roof slab, beams, columns, lintels, girders, and other structural members laid in site or pre cast laid in position or prestressed members cost in site, complete in all respect (1:1½:3).	511	P.Cft		
6	Fabrication of mild steel reinforcement for cement concrete i/ c cutting, bending, laying, in position, making joints and fastening i/ c cost of binding wire and labour charges for binding of steel reinforcement (Also i/c removal of rust from bars)deformed bars. G-60	3035	P.Kg		
7	Providing embedding 10" (250 mm) wide ¼" (6 mm) thick rubber water stopper in expansion joints of R.C.C. roof slab complete in all respects.	66	P.Rft		
8	Cement Plaster 1:4 upto 20' (6.00 m) height ½" (13 mm) thick	1305	P.Sft		
9	Bitumen coating to plastered or cement concrete surface:- 14 lbs. per 100 Sft. (6.35 Kg per Sq.m) outside of RCC wall of UGWT	562	P.Sft		
10	Supplying and laying polythene sheet outside of RCC wall of UGWT, etc. 500 gauge (.005" thick)	562	P.Sft		
11	Cement concrete plain i/c placing, compacting ,finishing and curing complete including screening and washing of stone aggregate 1:2:4.	54	P.Cft		
12	Providing and fixing 1½"x1½"x3/16" (31x31x5 mm) angle iron step, in manhole chambers, including carriage andsetting the same in work to correct lines and levels.	10	Each		
13	Providing and fixing manhole cover 3'x3' size with SS sheet 16-SWG and frame of M.S angle iron 2"x2"x¼" size including hinges handle, holdfast and painting complete in all respect and as directed by the Engineer Incharge.	1	P.Job		
14	Providing/ fitting, laying of M.S pipe 4" dia for connecting with existing water supply pipe upto under ground water tank.	20	P.Rft		



Sr. No.	Description of items	Qty	Unit	Rate Quoted by the Contractor	
				Rate	Amount
15	Providing/ fixing of sluice/ gate valve 4" dia as required at site.	1	No.		
	<b>LT POWER CABLE</b>				
1	Supply at site, installation, commissioning and testing of PVC insulated armoured/unarmoured copper conductor cable 600/1000V grade copper 99.95% pure, manufactured by any one of the manufacturers as mentioned in Pakistan cable/ Newage cable/Poioneer cables/Fast cable in prelaidd conduits/ trenches to be installed as per routes shown on drawings including cost of all necessary materials, connections, identification tags, cable Gland, cables Copper lugs properly crimped at both ends for the following sizes complete in all respects. Actual length of cables to be installed shall be measured at site and Payments shall be made as per actual length installed.				
a	2.5 mmSq 3 core CU/PVC/PVC From Pole Terminal box to Each light Fixtures	1550	Rft		
b	Laying & commsiiossing of 10 mmSq 2x 3 core PVC/PVC/ SWA/PVC From Pole Junction /Terminal box to respective DB-EX (instead of 1x4 core PVC/PVC/ SWA/PVC cable). This include all cost of material required for fixing/ laying except cable.	2815	Rft		
c	Laying & commsiiossing of 16 mmSq 2x2 core PVC/PVC/SWA/ PVC For Boundary Wall Security Lighting "MDB-EX to Pole Junction Box and Pole Junction Box to Pole Junction Box (instead of 1- 4 core PVC/PVC/ SWA/PVC cable). This include all cost of material required for fixing/ laying except cable.	3100	Rft		
d	6 mmSq 4 core CU/PVC/PVC/SWA/PVC From Pole Junction /Terminal box to respective MDB-EX to AREA LIGHTING Pole	430	Rft		
e	Laying & commsiiossing of 16 mmSq 4 core PVC/PVC From MDB-EX to DB-EX-01. This include all cost of material required for fixing/ laying except cable.	735	Rft		
f	Laying & commsiiossing of 16 mmSq 4 core PVC/PVC/ From MDB-EX to DB-EX02. This include all cost of material required for fixing/ laying except cable.	250	Rft		

Sr. No.	Description of items	Qty	Unit	Rate Quoted by the Contractor	
				Rate	Amount
g	Laying & commissioning of 16 mmSq 4 core PVC/PVC/ From MDB-EX to DB-EX03. This include all cost of material required for fixing/ laying except cable.	70	Rft		
h	35 mm Sq 4 core PVC/PVC/SWA/PVC From MDB-EX to DB-EX-04	1200	Rft		
	<b>PVC PIPE &amp; KATCHA TRENCH</b>				
1	Supply and erection 50 mm Class E PVC pipe for wiring to Pull Power & Earthing cable, including bends, specials, etc. in floor, wall or trenches etc	200	Rft		
2	Supply and erection surface mounted 50 mm Class D PVC pipe to Pull Power cable, including all fixing material & specials accessories, etc.	1885	Rft		
3	Katcha cable Trench for LT Cable Excavation and refilling with Sand, First Class Brick, Warning Tape, trench as 6" wide x 30 deep, ramming, watering, 6" of fine sand cushion below and 6" above the Electric cable/ conduit, including cost of all necessary materials, complete in all respects.	1200	Rft		
	<b>LIGHT FITTING &amp; FIXTURES</b>				
1.05	Supply, installation and commissioning of following power complete light fitting consisting of Flood light fixture made by Sun Light/ Philips/Thorn/ NVC/ Oppl/SKY ELECTRIC OR Equal. Aluminum body, Unti-Glare Flood Light LED lamps, minimum 125lm/w life 50000 hr, pfi 0.95, IP-66, Power supply 220/240 Voltage. including cost of fitting necessary accessories, complete in all respects.				
a	600/620 Watt for Practice Pitche	24	Each		
b	300/310 Watt Badminton Court	16	Each		
c	300/310 Watt Basket Ball	24	Each		
d	200 Watt Boundary Wall (130lm/w)	52	Each		
e	300/310 Watt Area Light	6	Each		
	<b>POLE &amp; ACCESSORIES</b>				
1.06	<b>POLE'S FOUNDATION</b>				

Sr. No.	Description of items	Qty	Unit	Rate Quoted by the Contractor	
				Rate	Amount
	Preparations, Providing material and construction of RCC Pole foundation of suitable for 8/10/12Mtr High pole consisting of c.c. 1:2:4 of size 18"x 18" x 72" deep as shown on drawing, J shaped anchor bolts 1" dia. x 36" long, G.I. nuts, washers, J Bolts shall be hot dip after fabrication along with all necessary materials including cost of lean concrete 6" thick 1:4:8 excavation, refilling and 4-J bolts, excluding cost of J Bolts, wind pressure 120KM complete in all respects.				
a	Foundation for 12 Meter pole	6	Each		
b	Foundation for 10 Meter pole	7	Each		
c	Foundation for 8 Meter pole	18	Each		
1.07	<b>FLOOD LIGHTING POLE</b>				
	Supply at site. Factory Fabricated & installation of MS Octagonal Pole Bottom 6" & 3" Top, including with welded Base Plate. Pole thickness shall be follow 3.25 mm. Pole shall be Hot Dip Galvanized after completion of all fabrication as mentioned on drawings, complete in all respects. Excluding cost of Control box & Lighting frame, complete in all respects.				
	12 Mtr Pole for Practice Pitche	6	Each		
	10 Mtr Pole	7	Each		
	8 Mtr Pole	18	Each		
1.08	<b>LIGHTING FRAME</b>				
	Supply at site. Factory Fabricated & installation of Following MS Lighting Frame/ Bracket, including with Welded Base Plate. Bracket must be made with angle iron 2" Heavy Gauge. Lighting Frame/ Bracket Pole shall be Hot Dip Galvanized after completion, complete in all respects. complete in all respects.				
a	Frame for 4 Nos Lights 600Watt for Practice Pitche	6	Each		
b	Frame for 4 Nos Lights 300Watt for Bedmintain Court	4	Each		
c	Frame for 4 Nos Lights 300Watt for Basket Bell	6	Each		
d	Frame for 3 Nos Lights 200Watt for Boundary Wall	14	Each		
e	Frame for 6 Nos Lights 300Watt for Area Light	1	Each		

Sr. No.	Description of items	Qty	Unit	Rate Quoted by the Contractor	
				Rate	Amount
	<b>LT SWITCH GEAR</b>				
1.08	POLE LIGHT CONTROL JUNCTION BOX (IP-65) PROTECTION CLASS				
	Supply and installation of following Pole lighth control junction box to be installed with pole, including cost ounder mention.accessories with all necessary accessories, complete in all respects:-				
a	25A, TP, MCB, Outgoing 6-10Amp MCB and 6-40Amps porcelain lineup connectors suitable for 6/ 16 mm.sq. cables, rubber gasket, PVC bushes	7	Each		
b	30A, TP, MCB, Outgoing 6-10Amp MCB and 6-40Amps porcelain lineup connectors suitable for 6/ 16 mm.sq. cables, rubber gasket, PVC bushes	24	Each		
1.09	<b>MAIN DISTRIBUTION BOARD (IP-65) PROTECTION CLASS</b>				
	Supply at site, fabrication, installation, testing, commissioning and connections of wires / cables of distribution Board to be installed as and where shown on drawing, made of MS sheet 14 SWG degreased and derusted, zinc phosphated, finished with electro-static powder coating of 95 -100 micron thickness in approved colour with hinged door, flexible earthing strap lockable handle, catcher, earthing bar,				
	neutral bar, 3 Volt meter, 3CTs, 3- Ammeter, 3 Phase indication lights (R.Y.B), internal wiring 3 from MCCBs terminating on cable terminal blocks to be installed at the bottom of DB, including cost of Sets of Glands & lugs suitable for cables of sizes corresponding to the breaker capacities & all necessary materials. complete in all respects. INCOMING & OUTGOINGS AS PER SINGLE LINE DIAGRAM	1	Each		
1.1	<b>DISTRIBUTION BOARD (IP-65) PROTECTION CLASS</b>				

Sr. No.	Description of items	Qty	Unit	Rate Quoted by the Contractor	
				Rate	Amount
	Supply at site, fabrication, installation, testing, commissioning and connections of following Distribution Boards, wires / cables of distribution Board to be installed as and where shown on drawing, made of MS sheet 14 SWG degreased and derusted, zinc phosphated, finished with electro-static powder coating of 95 -100 micron thickness in approved colour with hinged door, flexible earthing strap lockable handle, catcher, earthing bar, neutral bar, 3 Phase indication lights (R.Y.B), internal wiring 3 from MCCBs terminating on cable terminal blocks to be installed at the bottom, including cost of Sets of Glands & lugs suitable for cables of sizes corresponding to the breaker capacities & all necessary materials. complete in all respects. INCOMING & OUTGOINGS AS PER SINGLE LINE DIAGRAM				
a	DB-EX-01	1	Each		
b	DB-EX-02	1	Each		
c	DB-EX-03	1	Each		
d	DB-EX-04	1	Each		
	<b>EARTHING SYSTEM</b>				
1.11	<b>EARTHING OF POLES</b>				
	Supply, installation of 16mm dia. 3 meter long copper weld rod driven in ground and 6" below ground level, including cost of 16mm.sq. bare copper conductor with clamps, copper wire from rod to pole in G.I. pipe buried under ground, including cost of all necessary materials, complete in all respects.	25	Each		
	<b>EARTHING DBS</b>				

Sr. No.	Description of items	Qty	Unit	Rate Quoted by the Contractor	
				Rate	Amount
1.12	Drilling of earth bore 4" dia 50 to 60ft. deep or up to water level, back filling, ramming, 2" dia G.I. Pipe lowering in bore alongwith 1"dia 10ft long copper rod with 70 mm Sq bare copper conductor, test link installed in earthing manhole including cost of 12"x12" x 12", Manhole with removable slab/cover, all other necessary material & accessories, complete in all respect. Earthing bores shall be made at minimum 6'-0" away from foundation and distance between earth bore shall not be less than 10'Ft.	6	Each		
	<b>CRICKET GROUND EQUIPMENT/ MACHINERY</b>				
1	Supply of Light Duty Manual Turf Roller. <b>Specifications:</b> <b>Weight:</b> Un-ballasted: 500 KG <b>Rolling Width:</b> 4 feet (1220mm) <b>Rolling Diameter:</b> 2 feet (610mm) <b>Handle:</b> Fitted with double action balanced handle and can be move both ways, i.e forward and reverse. <b>Ball Bearing:</b> Ball bearing attached on both sides of the roller drum. <b>Edges of Roller:</b> Round shape edges to avoid lines or creases to cricket turf pitches or synthetic non turf mats during rolling.	1	Each		
2	Supply of 2000 Kg Roller.	1	Each		
3	Supply of zero and fine cutting Auto Lawn Mower. <b>Specifications:</b> <b>Type:</b> Petrol Engine fine cutting reel mower. <b>Cutting Width:</b> 51 cm (20") <b>Cutting System:</b> Cylinder <b>Number of Blades:</b> Ten-Blade cylinder hardened and tempered at 45H.R.C mounted on greaseable bearings. <b>Engine:</b> 6.5 HP Honda Petrol Engine <b>Height of Cutting:</b> 2.4mm - 19mm (1/10" - 3/4").	1	Each		

Sr. No.	Description of items	Qty	Unit	Rate Quoted by the Contractor	
				Rate	Amount
4	Supply of Grass Cutting Machine on ride Lawn Mover <b>Specifications:</b> <b>Type:</b> Petrol Engine heavy duty reel mower. <b>Cutting Width:</b> 91 cm (36") <b>Cutting System:</b> Cylinder <b>Number of Blades:</b> Six-Blade cylinder hardened and tempered at 45H.R.C mounted on greaseable bearings. <b>Engine:</b> 13 HP Honda Petrol Engine <b>Height of Cutting:</b> 2.5mm - 45mm <b>Height of Cut adjustment:</b> Fully variable with support stand. <b>Handlebars:</b> Variable height positions. Blade-bar for cylinder with coupling system. <b>Rear Roller:</b> Made up of aluminum/steel in two sections, diameter 10" and fitted with bearing on both sides. <b>Front Roller:</b> Made up of steel with sealed bearing.	1	Each		
5	Supply of Manual Super Sucker <b>Specifications:</b> Manual sucker will remove 25mm surface water. Single perforated barrel. Works on all surfaces, Turf, Synthetic grass, sand, clay Guarantee play will start on Time.	1	Each		
6	Supply of Scoreboard moveable and easily used cricket scoreboard featuring total, wickets and Overs. <b>Specifications:</b> • M.S sheet 18 gauge. • M.S pipe 15-gauge for M.S sheet framing. • Size 16'x16' moveable with 32 number plates.	1	Each		
7	Supply of Sight screen Parachute Cloth. <b>Specifications:</b> • Size length 24'x Height 12'x width 5' • Pair • Fitted with tires and tube. • Moveable Handle • Parachute cloth.	1	Each		

Sr. No.	Description of items	Qty	Unit	Rate Quoted by the Contractor	
				Rate	Amount
8	Supply of boundary rope 2" dia <b>Specifications:</b> <b>Thickness:</b> 2" <b>Colour:</b> Off white <b>Length:</b> 1500'	1189	Each		
9	Supply of Water and drink trolley. <b>Specifications:</b> <b>Size:</b> 5' x 3' Made by 1½" iron angle Galvanized Iron Sheet 20 gauge Fitted with ice box local Four tires & tube complete	1	Each		
10	Supply of pitch cover Canvas Type	4000	P.Sft		
11	Supply boom spray machine Trolley type.	1	Each		

**NOTE:-**

- The contractor will carry out topographic survey before starting/ execution of the work so that final furnish level can be marked/ decided.
- Sample of sweet earth/ bhal will be got approved before laying of earth.
- Bambo stick of appropriate length and thickness/ dia (should be at-least 3-feet longer than the plant size) will be erected/ tied alongwith each plant to ensure vertical growth of plant.



**Appendix-C to Bid****PROPOSED CONSTRUCTION SCHEDULE**

Pursuant to Conditions of Contract, the Works shall be completed on or before the date stated in Appendix-A to Bid. The Bidder shall provide as Appendix-E to Bid, the Construction Schedule in the bar chart (CPM, PERT or any other to be specified herein) showing the sequence of work items and the period of time during which he proposes to complete each work item in such a manner that his proposed programme for completion of the whole of the Works and parts of the Works may meet Employer's completion targets in days noted below and counted from the date of receipt of Engineer's Notice to Commence (Attach sheets as required for the specified form of Construction Schedule):

**Description****Time for Completion**

a) Whole Works

\_\_\_\_\_ days

**Appendix-D to Bid**

**METHOD OF PERFORMING THE WORK**

[The Bidder is required to submit a narrative outlining the method of performing the Work. The narrative should indicate in detail and include but not be limited to:

1. Organization Chart indicating head office and field office personnel involved in management and supervision, engineering, equipment maintenance and purchasing.
2. N/A.
3. The method of executing the Works, the procedures for installation of equipment and machinery and transportation of equipment and materials to the site.]

**LIST OF MAJOR EQUIPMENT – RELATED ITEMS**

[The Bidder will provide on Sheet 2 of this Appendix a list of all major equipment and related items, under separate heading for items owned, to be purchased or to be arranged on lease by him to carry out the Works. The information shall include make, type, capacity, and anticipated period of utilization for all equipment which shall be in sufficient detail to demonstrate fully that the equipment will meet all requirements of the Specifications.]

## Appendix-E to Bid

## LIST OF MAJOR EQUIPMENT

Owned Purchased or Leased	Description of Unit (Make, Model, Year)	Capacity HP Rating	Condition	Present Location or Source	Date of Delivery at Site	Period of Work on Project
1	2	3	4	5	6	7
a. Owned						
b. To be Purchased						
c. To be arranged on Lease						

**Appendix-F to Bid**

**CONSTRUCTION CAMP AND HOUSING FACILITIES**

The Contractor in accordance with Clause 34 of the Conditions of Contract shall provide description of his construction camp's facilities and staff housing requirements.

The Contractor shall be responsible for pumps, electrical power, water and electrical distribution systems, and sewerage system including all fittings, pipes and other items necessary for servicing the Contractor's construction camp.

The Bidder shall list or explain his plans for providing these facilities for the service of the Contract as follows:

1. Site Preparation (clearing, land preparation, etc.).
2. Provision of Services.
  - a) Power (expected power load, etc.).
  - b) Water (required amount and system proposed).
  - c) Sanitation (sewage disposal system, etc.).
3. Construction of Facilities
  - a) Contractor's Office. Workshop and Work Areas (areas required and proposed layout, type of construction of buildings, etc.).
  - b) Warehouses and Storage Areas (area required, type of construction and layout).
  - c) Housing and Staff Facilities (Plans for housing for proposed staff, layout, type of construction, etc.).
4. Construction Equipment Assembly and Preparation (detailed plans for carrying out this activity).
5. Other Items Proposed (Security services, etc.).

**LIST OF SUBCONTRACTORS**

**Subcontractors are not allowed**

**ESTIMATED PROGRESS PAYMENTS**

Bidder's estimate of the value of work which would be executed by him during each of the periods stated below, based on his Programme of the Works and the Rates in the Bill of Quantities, expressed in thousands of Pakistani Rupees:

<b>Quarter/ Year/ Period</b>	<b>Amounts (1,000 Rs.)</b>
<b>1</b>	<b>2</b>
Ist Month	
2 <sup>nd</sup> Month	
3 <sup>rd</sup> Month	
4 <sup>th</sup> Month	
5 <sup>th</sup> Month	
<b>Bid Price</b>	

**BK-1**

**Appendix-I to Bid**

**ORGANIZATION CHART  
FOR THE  
SUPERVISORY STAFF AND LABOUR**



(INTEGRITY PACT)

**DECLARATION OF FEES, COMMISSION AND BROKERAGE ETC.  
PAYABLE BY THE SUPPLIERS OF GOODS, SERVICES & WORKS IN  
CONTRACTS WORTH RS. 10.00 MILLION OR MORE**

Contract No. \_\_\_\_\_ Dated \_\_\_\_\_

Contract Value: \_\_\_\_\_

Contract Title: \_\_\_\_\_

..... [name of Supplier] hereby declares that it has not obtained or induced the procurement of any contract, right, interest, privilege or other obligation or benefit from Government of Pakistan (GoP) or any administrative subdivision or agency thereof or any other entity owned or controlled by GoP through any corrupt business practice.

Without limiting the generality of the foregoing, [name of Supplier] represents and warrants that it has fully declared the brokerage, commission, fees etc. paid or payable to anyone and not given or agreed to give and shall not give or agree to give to anyone within or outside Pakistan either directly or indirectly through any natural or juridical person, including its affiliate, agent, associate, broker, consultant, director, promoter, shareholder, sponsor or subsidiary, any commission, gratification, bribe, finder's fee or kickback, whether described as consultation fee or otherwise, with the object of obtaining or inducing the procurement of a contract, right, interest, privilege or other obligation or benefit in whatsoever form from GoP, except that which has been expressly declared pursuant hereto.

[name of Supplier] certifies that it has made and will make full disclosure of all agreements and arrangements with all persons in respect of or related to the transaction with GoP and has not taken any action or will not take any action to circumvent the above declaration, representation or warranty.

[name of Supplier] accepts full responsibility and strict liability for making any false declaration, not making full disclosure, misrepresenting facts or taking any action likely to defeat the purpose of this declaration, representation and warranty. It agrees that any contract, right, interest, privilege or other obligation or benefit obtained or procured as aforesaid shall, without prejudice to any other rights and remedies available to GoP under any law, contract or other instrument, be voidable at the option of GoP.

Notwithstanding any rights and remedies exercised by GoP in this regard, [name of Supplier] agrees to indemnify GoP for any loss or damage incurred by it on account of its corrupt business practices and further pay compensation to GoP in an amount equivalent to ten times the sum of any commission, gratification, bribe, finder's fee or kickback given by [name of Supplier] as aforesaid for the purpose of obtaining or inducing the procurement of any contract, right, interest, privilege or other obligation or benefit in whatsoever form from GoP.

Name of Buyer: .....

Signature: .....

[Seal]

Name of Seller/Supplier: .....

Signature: .....

[Seal]

## **FORMS**

### **PERFORMANCE SECURITY CONTRACT AGREEMENT**

**FORM OF PERFORMANCE SECURITY  
(Bank Guarantee)**

Guarantee No. \_\_\_\_\_

Executed on \_\_\_\_\_

Expiry date \_\_\_\_\_

[Letter by the Guarantor to the Employer]

Name of Guarantor (Bank) with address: \_\_\_\_\_  
(Scheduled Bank in Pakistan)

Name of Principal (Contractor) with address: \_\_\_\_\_

Penal Sum of Security (express in words and figures) \_\_\_\_\_

Letter of Acceptance No. \_\_\_\_\_ Dated \_\_\_\_\_

KNOW ALL MEN BY THESE PRESENTS, that in pursuance of the terms of the Bidding Documents and above said Letter of Acceptance (hereinafter called the Documents) and at the request of the said Principal we, the Guarantor above named, are held and firmly bound unto the \_\_\_\_\_ (hereinafter called the Employer) in the penal sum of the amount stated above for the payment of which sum well and truly to be made to the said Employer, we bind ourselves, our heirs, executors, administrators and successors, jointly and severally, firmly by these presents.

THE CONDITION OF THIS OBLIGATION IS SUCH, that whereas the Principal has accepted the Employer's above said Letter of Acceptance for \_\_\_\_\_  
\_\_\_\_\_ (Name of Contract) for the \_\_\_\_\_  
\_\_\_\_\_ (Name of Project).

NOW THEREFORE, if the Principal (Contractor) shall well and truly perform and fulfill all the undertakings, covenants, terms and conditions of the said Documents during the original terms of the said Documents and any extensions thereof that may be granted by the Employer, with or without notice to the Guarantor, which notice is, hereby, waived and shall also well and truly perform and fulfill all the undertakings, covenants terms and conditions of the Contract and of any and all modifications of said Documents that may hereafter be made, notice of which modifications to the Guarantor being hereby waived, then, this obligation to be void; otherwise to remain in full force and virtue till all requirements of Clause 49, Defects Liability, of Conditions of Contract are fulfilled.

Our total liability under this Guarantee is limited to the sum stated above and it is a condition of any liability attaching to us under this Guarantee that the claim for payment in writing shall be received by us within the validity period of this Guarantee, failing which we shall be discharged of our liability, if any, under this Guarantee.

We, \_\_\_\_\_ (the Guarantor), waiving all objections and defences under the Contract, do hereby irrevocably and independently guarantee to pay to the Employer without delay upon the Employer's first written demand without cavil or arguments and without requiring the Employer to prove or to show grounds or reasons for such demand any sum or sums up to the amount stated above, against the Employer's written declaration that the Principal has refused or failed to perform the obligations under the Contract which payment will be effected by the Guarantor to Employer's designated Bank & Account Number.

PROVIDED ALSO THAT the Employer shall be the sole and final judge for deciding whether the Principal (Contractor) has duly performed his obligations under the Contract or has defaulted in fulfilling said obligations and the Guarantor shall pay without objection any sum or sums up to the amount stated above upon first written demand from the Employer forthwith and without any reference to the Principal or any other person.

IN WITNESS WHEREOF, the above-bounden Guarantor has executed this Instrument under its seal on the date indicated above, the name and corporate seal of the Guarantor being hereto affixed and these presents duly signed by its undersigned representative, pursuant to authority of its governing body.

Witness:	_____ Guarantor (Bank)
1. _____	Signature _____
_____ Corporate Secretary (Seal)	Name _____
	Title _____
2. _____	
_____ Name, Title & Address	_____ Corporate Guarantor (Seal)

**FORM OF CONTRACT AGREEMENT**

THIS CONTRACT AGREEMENT (hereinafter called the "Agreement") made on the \_\_\_\_\_ day of \_\_\_\_\_ (month) 20\_\_\_\_ between \_\_\_\_\_ (hereafter called the "Employer") of the one part and \_\_\_\_\_ (hereafter called the "Contractor") of the other part.

WHEREAS the Employer is desirous that certain Works, viz \_\_\_\_\_ should be executed by the Contractor and has accepted a Bid by the Contractor for the execution and completion of such Works and the remedying of any defects therein.

NOW this Agreement witnesseth as follows:

1. In this Agreement words and expressions shall have the same meanings as are respectively assigned to them in the Conditions of Contract hereinafter referred to.
2. The following documents after incorporating addenda, if any, except those parts relating to Instructions to Bidders shall be deemed to form and be read and construed as part of this Agreement, viz:
  - (a) The Contract Agreement;
  - (b) The Letter of Acceptance;
  - (c) The completed Form of Bid;
  - (d) Special Stipulations (Appendix-A to Bid);
  - (e) The Particular Conditions of Contract – Part I;
  - (h) The priced Bill of Quantities ;
  - (i) The completed Appendices to Bid (B, C, E to J);
  - (j) The Drawings;
  - (k) The Specifications.
3. In consideration of the payments to be made by the Employer to the Contractor as hereinafter mentioned, the Contractor hereby covenants with the Employer to execute and complete the Works and remedy defects therein in conformity and in all respects with the provisions of the Contract.
4. The Employer hereby covenants to pay the Contractor, in consideration of the execution and completion of the Works as per provisions of the Contract, the Contract Price or such other sum as may become payable under the provisions of the Contract at the times and in the manner prescribed by the Contract.

IN WITNESS WHEREOF the parties hereto have caused this Agreement to be executed on the day, month and year first before written in accordance with their respective laws.

Signature of the Contactor

\_\_\_\_\_  
(Seal)

Signature of Employer

\_\_\_\_\_  
(Seal)

Signed, Sealed and Delivered in the presence of:

Witness:

\_\_\_\_\_

(Name, Title and Address)

Witness:

\_\_\_\_\_

(Name, Title and Address)

## **TABLE OF CONTENTS**

### **PART I - PARTICULAR CONDITIONS OF CONTRACT**

<b>Clause</b>	<b>Title</b>	<b>Page</b>
1.1	Definitions	147
2.1	Engineer's Duties and Authority	147
2.2	Engineer's Representative	149
2.7	Engineer Not Liable	149
2.8	Replacement of the Engineer	149
5.1	Language(s) and Law	149
5.2	Priority of Contract Documents	149
6.6	Shop Drawings	150
6.7	As-Built Drawings	150
10.1	Performance Security	150
10.4	Performance Security Binding on Variations and Changes	151
14.1	Programme to be Submitted	151
14.3	Cash Flow Estimate to be Submitted	151
14.5	Detailed Programme and Monthly Progress Report	151
15.2	Language Ability of Contractor's Representative	152
15.3	Contractor's Representative	152
16.3	Language Ability of Superintending Staff of Contractor	152
16.4	Employment of Local Personnel	152
19.3	Safety Precautions	152
19.4	Lighting Works at Night	153
20.4	Employer's Risks	153
21.1	Insurance of Works and Contractor's Equipment	153
21.4	Exclusions	154
25.5	Insurance Company	154
31.3	Co-operation with Other Contractors	154
34.2	Rates of Wages and Conditions of Labour	154
34.3	Employment of Persons in the Service of Others	154
34.4	Housing for Labour	154
34.5	Health and Safety	155
34.6	Epidemics	155
34.7	Supply of Water	155
34.8	Alcoholic Liquor or Drugs	155
34.9	Arms and Ammunition	155
34.10	Festivals and Religious Customs	155
34.11	Disorderly Conduct	156
34.12	Compliance by Subcontractors	156
35.2	Records of Safety and Health	156
35.3	Reporting of Accidents	156
36.6	Use of Pakistani Materials and Services	156
41.1	Commencement of Works	156
47.3	Bonus for Early Completion of Works	157
48.2	Taking Over of Sections or Parts	157
51.2	Instructions for Variations	157

## **TABLE OF CONTENTS**

### **PART I - PARTICULAR CONDITIONS OF CONTRACT**

<b>Clause</b>	<b>Title</b>	<b>Page</b>
52.1	Valuation of Variations	157
53.4	Failure to Comply	157
54.3	Customs Clearance	157
54.5	Conditions of Hire of Contractor's Equipment	157
59.4	Payments to Nominated Sub-contractors	157
59.5	Evidence of Payments	158
60.1	Monthly Statements	158
60.2	Monthly Payments	158
60.10	Time for Payment	158
60.11	Secured Advance on Materials	159
60.11	Financial Assistance to Contractor	159
63.1	Default of Contractor	161
65.2	Special Risks	161
67.3	Arbitration	161
68.1	Notice to Contractor	161
68.2	Notice to Employer and Engineer	162
70.1	Increase or Decrease of Cost	162
73.1	Payment of Income Tax	163
73.2	Customs Duty & Taxes	164
74.1	Integrity Pact	164
75.1	Termination of Contract for Employer's Convenience	164
76.1	Liability of Contractor	164
77.1	Joint and Several Liability	165
78.1	Details to be Confidential	165



**PART I - PARTICULAR CONDITIONS OF CONTRACT**  
**(Mandatory Provisions not to be Amended / Substituted except as instructed by PEC)**

**1.1 Definitions**

(a) (i) The Employer is .....  
.....(insert name along with his full address).

(a) (iv) The Engineer is .....  
.....(insert name of the Firm/Company/Person nominated as Engineer alongwith his full address), or any other competent person appointed by the Employer, and notified to the Contractor, to act in replacement of the Engineer. Provided always that except in cases of professional misconduct, the outgoing Engineers is to formulate his certifications/recommendations in relation to all outstanding matters, disputes and claims relating to the execution of the Works during his tenure.

The following paragraph is added:

(a)(vi) “Bidder or Tenderer” means any person or persons, company, corporation, firm or joint venture submitting a Bid or Tender.

(b)(v) The following is added at the end of the paragraph:

The word “Tender” is synonymous with “Bid” and the word “Tender Documents” with “Bidding Documents”.

The following paragraph is added:

(b)(ix) “Programme” means the programme to be submitted by the Contractor in accordance with Sub-Clause 14.1 and any approved revisions thereto.

(e)(i) The text is deleted and substituted with the following:

“Contract Price” means the sum stated in the Letter of Acceptance as payable to the Contractor for the execution and completion of the Works subject to such additions thereto or deductions therefrom as may be made and remedying of any defects therein in accordance with the provisions of the Contract.

**2.1 Engineer's Duties and Authority**

With reference to Sub-Clause 2.1(b), the following provisions shall also apply;

The Engineer shall obtain the specific approval of the Employer before carrying out his duties in accordance with the following Clauses:

(i) Consenting to the sub-letting of any part of the Works under Sub-Clause 4.1 “Subcontracting”.

(ii) Certifying additional cost determined under Sub-Clause 12.2 “Not Foreseeable

Physical Obstructions or Conditions”.

- (iii) Any action under Clause 10 “Performance Security” and Clauses 21,23,24 & 25 “Insurance” of sorts.
- (iv) Any action under Clause 40 “Suspension”.
- (v) Any action under Clause 44 “Extension of Time for Completion”.
- (vi) Any action under Clause 47 “Liquidated Damages for Delay” or Payment of Bonus for Early Completion of Works (PCC Sub-Clause 47.3).
- (vii) Issuance of “Taking Over Certificate” under Clause 48.
- (viii) Issuing a Variation Order under Clause 51,except:
  - a) in an emergency\* situation, as stated herebelow, or
  - b) if such variation would increase the Contract Price by less than the amount stated in the Appendix-A to Bid.
- (ix) Fixing rates or prices under Clause 52.
- (x) Extra payment as a result of Contractor’s claims under Clause 53.
- (xi) Release of Retention Money to the Contractor under Sub-Clause 60.3 “Payment of Retention Money”.
- (xii) Issuance of “Final Payment Certificate” under Sub-Clause 60.8.
- (xiii) Issuance of “Defect Liability Certificate” under Sub-Clause 62.1.
- (xiv) Any change in the ratios of Contract currency proportions and payments thereof under Clause 72 “Currency and Rate of Exchange”.

(Note: Employer may further vary according to need of the project)

\* (If in the opinion of the Engineer an emergency occurs affecting the safety of life or of the Works or of adjoining property, the Engineer may, without relieving the Contractor of any of his duties and responsibilities under the Contract, instruct the Contractor to execute all such work or to do all such things as may, in the opinion of the Engineer, be necessary to abate or reduce the risk. The Contractor shall forthwith comply with any such instruction of the Engineer. The Engineer shall determine an addition to the Contract Price, in respect of such instruction, in accordance with Clause 52 and shall notify the Contractor accordingly, with a copy to the Employer.)

## **2.2 Engineer's Representative**

The following paragraph is added:

The Employer shall ensure that the Engineer's Representative is a professional engineer as defined in the Pakistan Engineering Council Act 1975 (V of 1976)

The following Sub-Clauses 2.7 and 2.8 are added:

## **2.7 Engineer Not Liable**

Approval, reviews and inspection by the Engineer of any part of the Works does not relieve the Contractor from his sole responsibility and liability for the supply of materials, plant and equipment for construction of the Works and their parts in accordance with the Contract and neither the Engineer's authority to act nor any decision made by him in good faith as provided for under the Contract whether to exercise or not to exercise such authority shall give rise to any duty or responsibility of the Engineer to the Contractor, any Subcontractor, any of their representatives or employees or any other person performing any portion of the Works.

## **2.8 Replacement of the Engineer**

"If the Employer intends to replace the Engineer, the Employer shall, not less than 14 days before the intended date of replacement, give notice to the Contractor, of the name, address and relevant experience of the intended replacement Engineer. The Employer shall not replace the Engineer with a person against whom the Contractor raises reasonable objection by notice to the Employer, with supporting particulars."

## **5.1 Language(s) and Law**

- (a) The Contract Documents, shall be drawn up in the English language.
- (b) The Contract shall be subject to the Laws of Islamic Republic of Pakistan.

## **5.2 Priority of Contract Documents**

The documents listed at (1) to (6) of the Sub-Clause are deleted and substituted with the following:

- (1) The Contract Agreement (if completed);
- (2) The Letter of Acceptance;
- (3) The completed Form of Bid;
- (4) Special Stipulations (Appendix-A to Bid);
- (5) The Particular Conditions of Contract – Part I;
- (6) The priced Bill of Quantities (Appendix-D to Bid);
- (7) The completed Appendices to Bid (B, C, E to L);
- (8) The Drawings;
- (9) The Specifications; and

In case of discrepancies between drawings, those of larger scale shall govern unless

they are superseded by a drawing of later date regardless of scale. All Drawings and Specifications shall be interpreted in conformity with the Contract and these Conditions. Addendum, if any, shall be deemed to have been incorporated at the appropriate places in the documents forming the Contract.

The following Sub-Clauses 6.6 and 6.7 are added:

#### **6.6 Shop Drawings**

The Contractor shall submit to the Engineer for review 3 copies of all shop and erection drawings applicable to this Contract as per provision of relevant Sub-Clause of the Contract.

Review and approval by the Engineer shall not be construed as a complete check but will indicate only that the general method of construction and detailing is satisfactory and that the Engineer's review or approval shall not relieve the Contractor of any of his responsibilities under the Contract.

#### **6.7 As-Built Drawings**

At the completion of the Works under the Contract, the Contractor shall furnish to the Engineer 4 copies and one reproducible of all drawings amended to conform with the Works as built. The price of such Drawings shall be deemed to be included in the Contract Price.

#### **10.1 Performance Security**

The text is deleted and substituted with the following:

The Contractor shall provide Performance Security to the Employer in the prescribed form. The said Security shall be furnished or caused to be furnished by the Contractor within 28 days after the receipt of the Letter of Acceptance. The Performance Security shall be of an amount equal to 05% of the Contract Price stated in the Letter of Acceptance. Such Security shall, at the option of the bidder, be in the form of either (a) bank guarantee from any Scheduled Bank in Pakistan or (b) bank guarantee from a bank located outside Pakistan duly counter-guaranteed by a Scheduled Bank in Pakistan

The cost of complying with requirements of this Sub-Clause shall be borne by the Contractor.

The following Sub-Clause 10.4 is added:

#### **10.4 Performance Security Binding on Variations and Changes**

The Performance Security shall be binding irrespective of changes in the quantities or variations in the Works or extensions in Time for Completion of the Works which are granted or agreed upon under the provisions of the Contract.

#### **14.1 Programme to be Submitted**

The programme shall be submitted within 10 days from the date of receipt of Letter of Acceptance, which shall be in the form of:

- i) a Bar Chart identifying the critical activities.
- ii) a CPM identifying the critical path/activities.  
(Employer to select appropriate one)

#### **14.3 Cash Flow Estimate to be Submitted**

The detailed Cash Flow Estimate shall be submitted within 21 days from the date of receipt of Letter of Acceptance

The following Sub-Clause 14.5 is added:

#### **14.5 Detailed Programme and Monthly Progress Report**

- a) For purposes of Sub-Clause 14.1, the Contractor shall submit to the Engineer detailed programme for the following:
  - (1) Execution of Works;
  - (2) Labour Employment;
  - (3) Local Material Procurement;
  - (4) Material Imports, if any; and
  - (5) Other details as required by the Engineer.
- (b) During the period of the Contract, the Contractor shall submit to the Engineer not later than the 8<sup>th</sup> day of the following month, 10 copies each of Monthly Progress Reports covering:
  - (1) A Construction Schedule indicating the monthly progress in percentage;
  - (2) Description of all work carried out since the last report;
  - (3) Description of the work planned for the next 56 days sufficiently detailed to enable the Engineer to determine his programme of inspection and testing;
  - (4) Monthly summary of daily job record;
  - (5) Photographs to illustrate progress ;and
  - (6) Information about problems and difficulties encountered, if any, and proposals to overcome the same.
- (c) During the period of the Contract, the Contractor shall keep a daily record of the work progress, which shall be made available to the Engineer as and when requested. The daily record shall include particulars of weather conditions, number of men working, deliveries of materials, quantity, location and assignment of Contractor's equipment.

The following Sub-Clauses 15.2 and 15.3 are added:

**15.2 Language Ability of Contractor's Representative**

The Contractor's authorised representative shall be fluent in the English language. Alternately an interpreter with ability of English language shall be provided by the Contractor on full time basis.

**15.3 Contractor's Representative**

The Contractor's authorised representative and his other professional engineers working at Site shall register themselves with the Pakistan Engineering Council.

The Contractor's authorised representative at Site shall be authorised to exercise adequate administrative and financial powers on behalf of the Contractor so as to achieve completion of the Works as per the Contract.

The following Sub-Clauses 16.3 and 16.4 are added:

**16.3 Language Ability of Superintending Staff of Contractor**

A reasonable proportion of the Contractor's superintending staff shall have a working knowledge of the English language. If the Contractor's superintending staff are not fluent in English language, the Contractor shall make competent interpreters available during all working hours in a number deemed sufficient by the Engineer.

**16.4 Employment of Local Personnel**

The Contractor is encouraged, to the extent practicable and reasonable, to employ staff and labour from sources within Pakistan.

The following Sub-Clauses 19.3 and 19.4 are added:

**19.3 Safety Precautions**

In order to provide for the safety, health and welfare of persons, and for prevention of damage of any kind, all operations for the purposes of or in connection with the Contract shall be carried out in compliance with the Safety Requirements of the Government of Pakistan with such modifications thereto as the Engineer may authorise or direct and the Contractor shall take or cause to be taken such further measures and comply with such further requirements as the Engineer may determine to be reasonably necessary for such purpose.

The Contractor shall make, maintain and submit reports to the Engineer concerning safety, health and welfare of persons and damage to property, as the Engineer may from time to time prescribe.

#### **19.4 Lighting Work at Night**

In the event of work being carried out at night, the Contractor shall at his own cost, provide and maintain such good and sufficient light as will enable the work to proceed satisfactorily and without danger. The approaches to the Site and the Works where the night-work is being carried out shall be sufficiently lighted. All arrangement adopted for such lighting shall be to the satisfaction of the Engineer's Representative.

#### **20.4 Employer's Risks**

The Employer's risks are:

Delete the text and substitute with the following:

- (a) insofar as they directly affect the execution of the Works in Pakistan:
  - (i) war and hostilities (whether war be declared or not), invasion, act of foreign enemies,
  - (ii) rebellion, revolution, insurrection, or military or usurped power, or civil war,
  - (iii) ionizing radiations, or contamination by radioactivity from any nuclear fuel, or from any nuclear waste from the combustion of nuclear fuel, radioactive toxic explosive or other hazardous properties of any explosive nuclear assembly or nuclear component thereof,
  - (iv) pressure waves caused by aircraft or other aerial devices travelling at sonic or supersonic speeds,
  - (v) riot, commotion or disorder, unless solely restricted to the employees of the Contractor or of his Subcontractors and arising from the conduct of the Works;
- (b) loss or damage due to the use or occupation by the Employer of any Section or part of the Permanent Works, except as may be provided for in the Contract;
- (c) loss or damage to the extent that it is due to the design of the Works, other than any part of the design provided by the Contractor or for which the Contractor is responsible; and
- (d) any operation of the forces of nature (insofar as it occurs on the Site) which an experienced contractor:
  - (i) could not have reasonably foreseen, or
  - (ii) could reasonably have foreseen, but against which he could not reasonably have taken at least one of the following measures:
    - (a) prevent loss or damage to physical property from occurring by taking appropriate measures, or
    - (b) insure against.

#### **21.1 Insurance of Works and Contractor's Equipment**

(Employer may vary this Sub-Clause 21.1 (b))

#### **21.4 Exclusions**

The text is deleted and substituted with the following:

There shall be no obligation for the insurances in Sub-Clause 21.1 to include loss or damage caused by the risks listed under Sub-Clause 20.4 paras (a) (i) to (iv).

The following Sub-Clause 25.5 is added:

#### **31.3 Co-operation with other Contractors**

During the execution of the Works, the Contractor shall co-operate fully with other contractors working for the Employer at and in the vicinity of the Site and also shall provide adequate precautionary facilities not to make himself a nuisance to local residents and other contractors.

The following Sub-Clauses 34.2 to 34.12 are added:

#### **34.2 Rates of Wages and Conditions of Labour**

The Contractor shall pay rates of wages and observe conditions of labour not less favourable than those established for the trade or industry where the work is carried out. In the absence of any rates of wages or conditions of labour so established, the Contractor shall pay rates of wages and observe conditions of labour which are not less favourable than the general level of wages and conditions observed by other employers whose general circumstances in the trade or in industry in which the Contractor is engaged are similar.

#### **34.3 Employment of Persons in the Service of Others**

The Contractor shall not recruit his staff and labour from amongst the persons in the services of the Employer or the Engineer; except with the prior written consent of the Employer or the Engineer, as the case may be.

#### **34.4 Housing for Labour**

Save insofar as the Contract otherwise provides, the Contractor shall provide and maintain such housing accommodation and amenities as he may consider necessary for all his supervisory staff and labour, employed for the purposes of or in connection with the Contract including all fencing, electricity supply, sanitation, cookhouses, fire prevention, water supply and other requirements in connection with such housing accommodation or amenities. On completion of the Contract, these facilities shall be handed over to the Employer or if the Employer so desires, the temporary camps or housing provided by the Contractor shall be removed and the Site reinstated to its original condition, all to the approval of the Engineer.



#### **34.5 Health and Safety**

Due precautions shall be taken by the Contractor, and at his own cost, to ensure the safety of his staff and labour at all times throughout the period of the Contract. The Contractor shall further ensure that suitable arrangements are made for the prevention of epidemics and for all necessary welfare and hygiene requirements.

#### **34.6 Epidemics**

In the event of any outbreak of illness of an epidemic nature, the Contractor shall comply with and carry out such regulations, orders and requirements as may be made by the Government, or the local medical or sanitary authorities, for purpose of dealing with and overcoming the same.

#### **34.7 Supply of Water**

The Contractor shall, so far as is reasonably practicable, having regard to local conditions, provide on the Site, to the satisfaction of the Engineer or his representative, adequate supply of drinking and other water for the use of his staff and labour.

#### **34.8 Alcoholic Liquor or Drugs**

The Contractor shall not, otherwise than in accordance with the Statutes, Ordinances and Government Regulations or Orders for the time being in force, import, sell, give, barter or otherwise dispose of any alcoholic liquor or drugs, or permit or suffer any such importation, sale, gift, barter or disposal by his Subcontractors, agents, staff or labour.

#### **34.9 Arms and Ammunition**

The Contractor shall not give, or otherwise dispose of to any person or persons, any arms or ammunition of any kind or permit or suffer the same as aforesaid.

#### **34.10 Festivals and Religious Customs**

The Contractor shall in all dealings with his staff and labour have due regard to all recognised festivals, days of rest and religious and other customs.

#### **34.11 Disorderly Conduct**

The Contractor shall at all times take all reasonable precautions to prevent any unlawful, riotous or disorderly conduct by or amongst staff and labour and for the preservation of peace and protection of persons and property in the neighbourhood of the Works against the same.

#### **34.12 Compliance by Subcontractors**

The Contractor shall be responsible for compliance by his Subcontractors of the provisions of this Clause.

The following Sub-Clauses 35.2 and 35.3 are added:

**35.2 Records of Safety and Health**

The Contractor shall maintain such records and make such reports concerning safety, health and welfare of persons and damage to property as the Engineer may from time to time prescribe.

**35.3 Reporting of Accidents**

The Contractor shall report to the Engineer details of any accident as soon as possible after its occurrence. In the case of any fatality or serious accident, the Contractor shall, in addition, notify the Engineer immediately by the quickest available means.

The following Sub-Clause 36.6 is added:

**36.6 Use of Pakistani Materials and Services**

The Contractor shall, so far as may be consistent with the Contract, make the maximum use of materials, supplies, plant and equipment indigenous to or produced or fabricated in Pakistan and services, available in Pakistan provided such materials, supplies, plant, equipment and services shall be of required standard.

**41.1 Commencement of Works**

The text is deleted and substituted with the following:

The Contractor shall commence the Works on Site within the period named in Appendix-A to Bid from the date of receipt by him from the Engineer of a written Notice to Commence. Thereafter, the Contractor shall proceed with the Works with due expedition and without delay.

The following Sub-Clause 47.3 is added:

**47.3 Bonus for Early Completion of Works**

N/A

**48.2 Taking Over of Sections or Parts**

For the purposes of para (a) of this Sub-Clause, separate Times for Completion shall be provided in the Appendix-A to Bid "Special Stipulations".

**51.2 Instructions for Variations**

At the end of the first sentence, after the word "Engineer", the words "in writing" are added.

## **52.1 Valuation of Variations**

In the tenth line, after the words “Engineer shall” the following is added:  
within a period not exceeding one-eighth of the completion time subject to a minimum of 56 days from the date of disagreement whichever is later.

## **53.4 Failure to Comply**

This Sub-Clause is deleted in its entirety.

## **54.3 Customs Clearance**

(Employer may vary this Sub-Clause)

## **54.5 Conditions of Hire of Contractor’s Equipment**

The following paragraph is added:

The Contractor shall, upon request by the Engineer at any time in relation to any item of hired Contractor’s Equipment, forthwith notify the Engineer in writing the name and address of the Owner of the equipment and shall certify that the agreement for the hire thereof contains a provision in accordance with the requirements set forth above.

The following Sub-Clauses 59.4 & 59.5 are added:

## **59.4 Payments to Nominated Subcontractors**

The Contractor shall pay to the nominated Subcontractor the amounts which the Engineer certifies to be due in accordance with the subcontract. These amounts plus other charges shall be included in the Contract Price in accordance with Clause 58 [Provisional Sums], except as stated in Sub-Clause 59.5 [Certification of Payments].

## **59.5 Certification of Payments & Nominated Subcontractors**

Before issuing a Payment Certificate which includes an amount payable to a nominated Subcontractor, the Engineer may request the Contractor to supply reasonable evidence that the nominated Subcontractor has received all amounts due in accordance with previous Payment Certificates, less applicable deductions for retention or otherwise. Unless the Contractor:

- a) submits reasonable evidence to the Engineer, or
- b)
  - i) satisfies the Engineer in writing that the Contractor is reasonably entitled to withhold or refuse to pay these amounts, and
  - ii) submits to the Engineer reasonable evidence that the nominated Subcontractor has been notified of the Contractor’s entitlement,

then the Employer may (at his sole discretion) pay direct to the nominated Subcontractor, part or all of such amounts previously certified (less applicable deductions) as are due to the nominated Subcontractor and for which the Contractor has failed to submit the evidence described in sub-paragraphs (a) or (b) above. The

Contractor shall then repay, to the Employer, the amount which the nominated Subcontractor was directly paid by the Employer.

## **60.1 Monthly Statements**

In the first line after the word “shall”, the following is added:

“on the basis of the joint measurement of work done under Clause 56.1,”

In Para (c) the words “the Appendix to Tender” are deleted and substituted with the words “ Sub-Cause 60.11 (a)(6) hereof”.  
(in case Clause 60.11 is applicable)

## **60.10 Time for Payment**

The text is deleted and substituted with the following:

The amount due to the Contractor under any Interim Payment Certificate issued by the Engineer pursuant to this Clause, or to any other terms of the Contract, shall , subject to Clause 47, be paid by the Employer to the Contractor within 45 days after such Interim Payment Certificate has been jointly verified by Employer and Contractor, or, in the case of the Final Certificate referred to in Sub Clause 60.8, within 60 days after such Final Payment Certificate has been jointly verified by Employer and Contractor; Provided that the Interim Payment shall be caused in 60 days.

## **60.11 Secured Advance on Materials**

- a) The Contractor shall be entitled to receive from the Employer Secured Advance against an indemnity bond acceptable to the Employer of such sum as the Engineer may consider proper in respect of non-perishable materials brought at the Site but not yet incorporated in the Permanent Works provided that:
  - (1) The materials are in accordance with the Specifications for the Permanent Works;
  - (2) Such materials have been delivered to the Site and are properly stored and protected against loss or damage or deterioration to the satisfaction of the Engineer but at the risk and cost of the Contractor;
  - (3) The Contractor’s records of the requirements, orders, receipts and use of materials are kept in a form approved by the Engineer, and such records shall be available for inspection by the Engineer;
  - (4) The Contractor shall submit with his monthly statement the estimated value of the materials on Site together with such documents as may be required by the Engineer for the purpose of valuation of materials and providing evidence of ownership and payment therefor;
  - (5) Ownership of such materials shall be deemed to vest in the Employer and these materials shall not be removed from the Site or otherwise

disposed of without written permission of the Employer; and

- (6) The sum payable for such materials on Site shall not exceed 75 % of the (i) landed cost of imported materials, or (ii) ex-factory / ex-warehouse price of locally manufactured or produced materials, or (iii) market price of other materials.

- (b) The recovery of Secured Advance paid to the Contractor under the above provisions shall be effected from the monthly payments on actual consumption basis.

### **63.1 Default of Contractor**

The following para is added at the end of the Sub-Clause:

Provided further that in addition to the action taken by the Employer against the Contractor under this Clause, the Employer may also refer the case of default of the Contractor to Pakistan Engineering Council for punitive action under the Construction and Operation of Engineering Works Bye-Laws 1987, as amended from time to time.

### **65.2 Special Risks**

The text is deleted and substituted with the following:

The Special Risks are the risks defined under Sub-Clause 20.4 sub paragraphs (a) (i) to (a) (v).

### **67.3 Arbitration**

In the sixth to eight lines, the words “shall be finally settled appointed under such Rules” are deleted and substituted with the following:

shall be finally settled under the provisions of the Arbitration Act, 1940 as amended or any statutory modification or re-enactment thereof for the time being in force.

The following paragraph is added:

The place of arbitration shall be Lahore, Pakistan.

### **68.1 Notice to Contractor**

The following paragraph is added:

For the purposes of this Sub-Clause, the Contractor shall, immediately after receipt of Letter of Acceptance, intimate in writing to the Employer and the Engineer by registered post, the address of his principal place of business or any change in such address during the period of the Contract.

### **68.2 Notice to Employer and Engineer**

For the purposes of this Sub-Clause, the respective address are:

- a) The Employer :  
Quaid-e-Azam Thermal Power Limited

### **73.1 Payment of Income Tax**

The Contractor, Subcontractors and their employees shall be responsible for payment of all their income tax, super tax and other taxes on income arising out of the Contract and the rates and prices stated in the Contract shall be deemed to cover all such taxes.

### **73.2 Customs Duty & Taxes**

(Employer may incorporate provisions where applicable)

### **74.1 Integrity Pact**

If the Contractor or any of his Subcontractors, agents or servants is found to have violated or involved in violation of the Integrity Pact signed by the Contractor as Appendix-J to his Bid, then the Employer shall be entitled to:

- (a) recover from the Contractor an amount equivalent to ten times the sum of any commission, gratification, bribe, finder's fee or kickback given by the Contractor or any of his Subcontractors, agents or servants;
- (b) terminate the Contract; and
- (c) recover from the Contractor any loss or damage to the Employer as a result of such termination or of any other corrupt business practices of the Contractor or any of his Subcontractors, agents or servants.

The termination under Sub-Para (b) of this Sub-Clause shall proceed in the manner prescribed under Sub-Clauses 63.1 to 63.4 and the payment under Sub-Clause 63.3 shall be made after having deducted the amounts due to the Employer under Sub-Para (a) and (c) of this Sub-Clause.

### **75.1 Termination of Contract for Employer's Convenience**

The Employer shall be entitled to terminate the Contract at any time for the Employer's convenience after giving 56 days prior notice to the Contractor, with a copy to the Engineer. In the event of such termination, the Contractor :

- (a) shall proceed as provided in Sub-Clause 65.7 hereof; and
- (b) shall be paid by the Employer as provided in Sub-Clause 65.8 hereof.

#### **76.1 Liability of Contractor**

The Contractor or his Subcontractors or assigns shall follow strictly, all relevant labour laws including the Workmen's Compensation Act and the Employer shall be fully indemnified for all claims, damages etc. arising out of any dispute between the Contractor, his Subcontractors or assigns and the labour employed by them.

#### **77.1 Joint and Several Liability**

If the Contractor is a joint venture of two or more persons, all such persons shall be jointly and severally bound to the Employer for the fulfilment of the terms of the Contract and shall designate one of such persons to act as leader with authority to bind the joint venture. The composition or the constitution of the joint venture shall not be altered without the prior consent of the Employer.

#### **78.1 Details to be Confidential**

The Contractor shall treat the details of the Contract as private and confidential, save in so far as may be necessary for the purposes thereof, and shall not publish or disclose the same or any particulars thereof in any trade or technical paper or elsewhere without the prior consent in writing of the Employer or the Engineer. If any dispute arises as to the necessity of any publication or disclosure for the purpose of the Contract, the same shall be referred to the decision of the Engineer whose award shall be final.

## **PART I –PARTICULAR CONDITIONS OF CONTRACT**

<b>Index</b>	<b>Clause</b>
Alcoholic Liquor or Drugs	34.8
Arbitration	67.3
Arms and Ammunition	34.9
As-Built Drawings	6.7
Bonus for Early Completion of Works	47.3
Cash Flow Estimate to be Submitted	14.3
Commencement of Works	41.1
Compliance by Sub-Contractors	34.12
Conditions of Hire of Contractor's Equipment	54.5
Contractor's Representative	15.3
Co-operation with Other Contractors	31.3
Customs Clearance	54.3
Customs Duty and Taxes	73.2
Default of Contractor	63.1
Definitions	1.1
Detailed Programme and Monthly Progress Report	14.5
Details to be Confidential	78.1
Disorderly Conduct	34.11
Employer's Risks	20.4
Employment of Local Personnel	16.4
Employment of Persons in the Service of Others	34.3
Engineer Not Liable	2.7
Engineer's Duties and Authority	2.1
Engineer's Representative	2.2
Epidemics	34.6
Exclusions	21.4
Failure to Comply	53.4
Festivals and Religious Customs	34.10
Financial Assistance to Contractor	60.11
Health and Safety	34.5
Housing for Labour	34.4
Increase or Decrease of Cost	70.1
Instructions for Variations	51.2
Insurance of Works and Contractor's Equipment	21.1
Insurance Company	25.5
Integrity Pact	74.1
Joint and Several Liability	77.1
Language Ability of Contractor's Representative	15.2
Language Ability of Superintending Staff of Contractor	16.3
Language(s) and Law	5.1
Liability of Contractor	76.1
Lighting Work at Night	19.4
Monthly Payments	60.2
Monthly Statements	60.1
Notice to Contractor	68.1



<b>Index</b>	<b>Clause</b>
Notice to Employer and Engineer	68.2
Payment of Income Tax	73.1
Payments of Nominated Subcontractors	59.4
Performance Security	10.1
Performance Security Binding on Variation and Changes	10.4
Priority of Contract Documents	5.2
Programme to be Submitted	14.1
Rates of Wages and Conditions of Labour	34.2
Records of Safety and Health	35.2
Replacement of the Engineer	2.8
Reporting of Accidents	35.3
Safety Precautions	19.3
Secured Advance on Materials	60.11
Shop Drawings	6.6
Special Risks	65.2
Supply of Water	34.7
Taking Over of Sections or Parts	48.2
Termination of Contract for Employer's Convenience	75.1
Time for Payment	60.10
Use of Pakistani Materials and Services	36.6
Valuation of Variations	52.1

## **SPECIFICATIONS- TECHNICAL PROVISIONS**

Detail specification for additional work of building, Public Health water supply and Electricity has been given in the detail working drawings and Bill of Quantities attached with the Tender Documents.

### **TECHNICAL FIELD TESTING REQUIREMENT**

Following tests for construction materials shall be carried out:

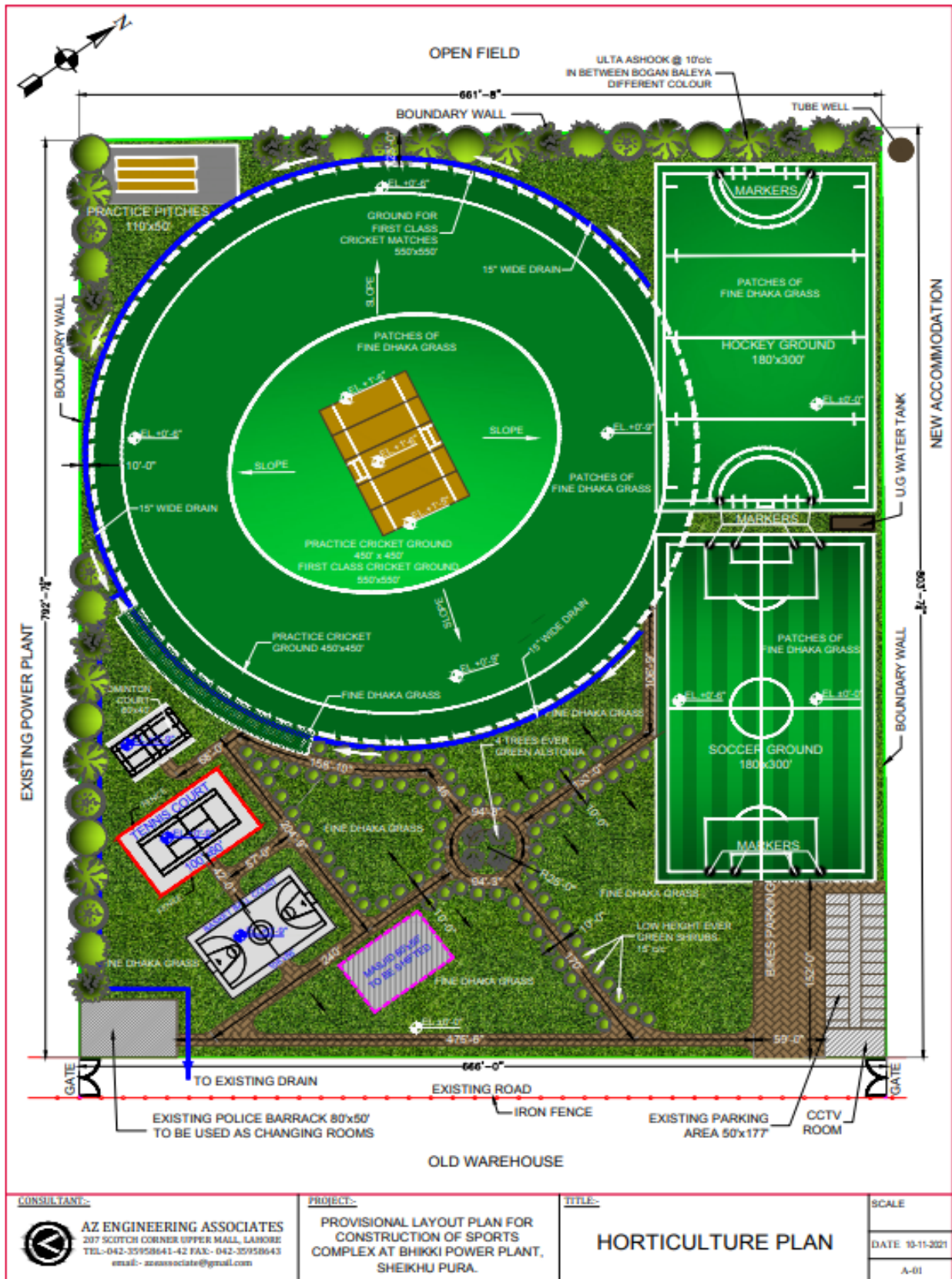
<b>Sr. No.</b>	<b>Material</b>	<b>Test</b>	<b>Reference</b>
1	Concrete	1. Slump Test	ASTM C 143
		2. Compression test of 6"x6"x6" cube concrete samples at 28 days or cylinder strength 6"x12"	BS 1881-108
2	Bricks	Compressive Strength 2000 Psi	ASTM C 0067-03a
3	Reinforcing Steel	1. Tensile Strength	ASTM A 370
		2. Elongation Test	ASTM A 370

Following tests for the electric cables used should be got carried over:

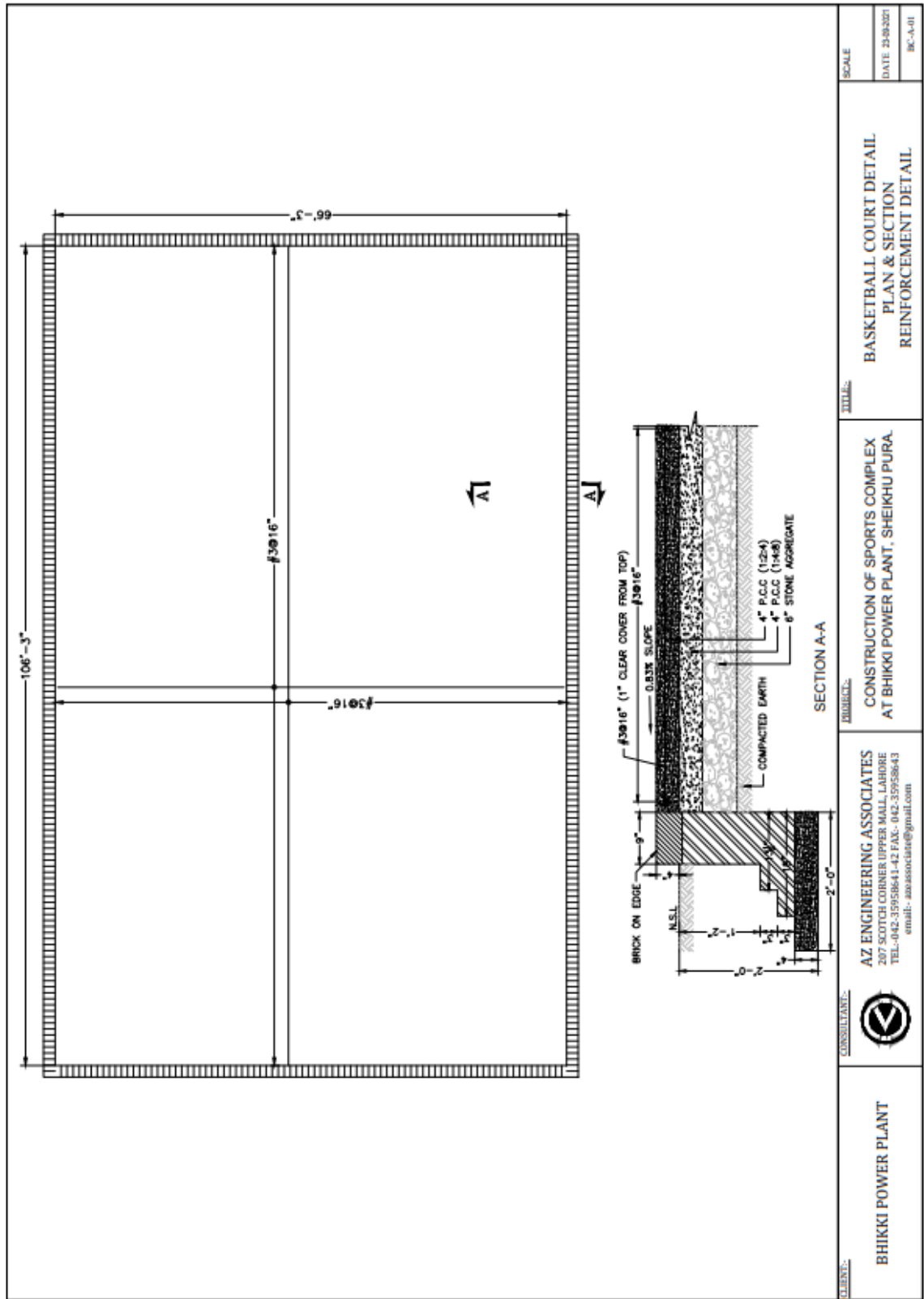
1. Copper Purity Test
2. Conductivity Test
3. Insulation Test
4. High Voltage Test

- The Contractor will pay all the expenses relating to material testing including but not limited to the cost of material, sample preparation, carriage and testing fee etc.
- The Contractors shall make available at site the equipment / apparatus required for testing of material as directed by the Company.
- The quantity of samples and the frequency of tests will be as per above Standards or as directed by the Engineer Incharge.

# **DRAWINGS**

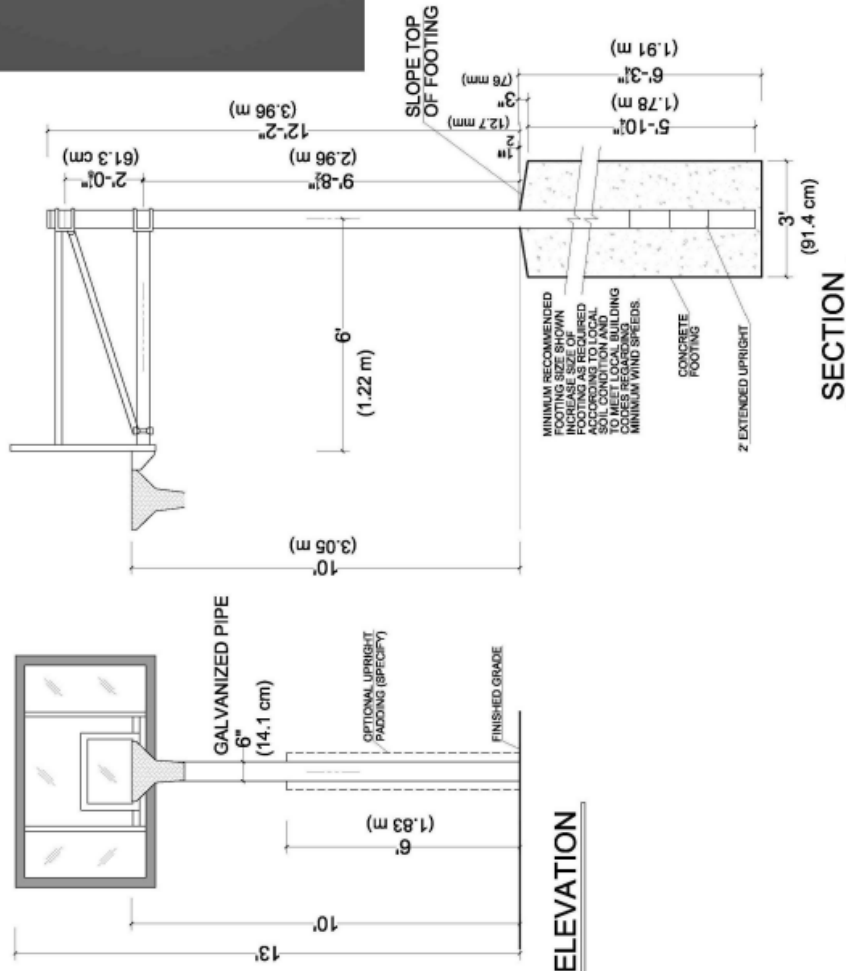






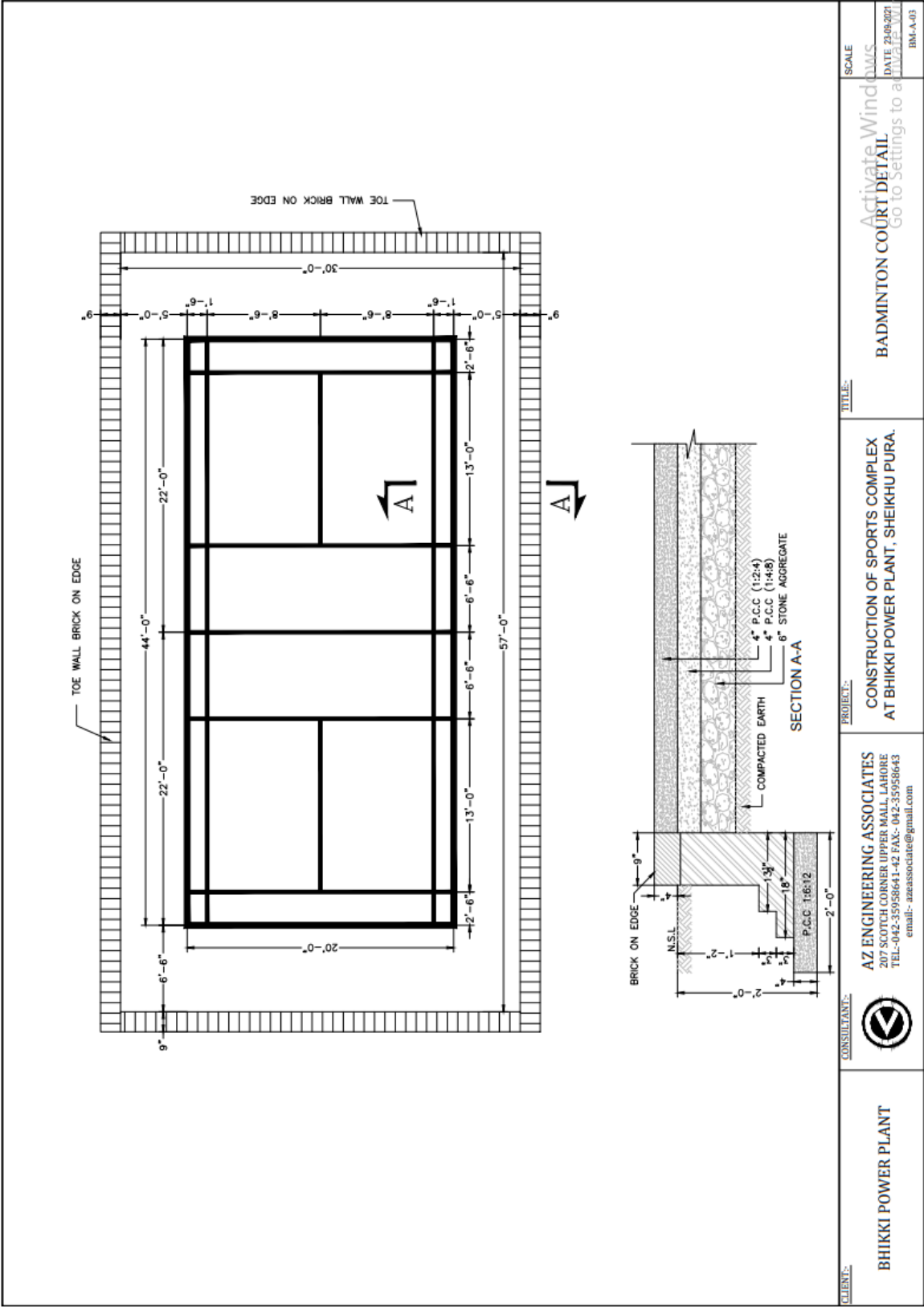


3D IMAGE

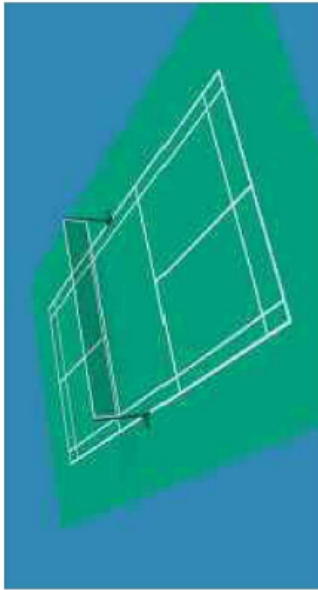


# BASKETBALL POST

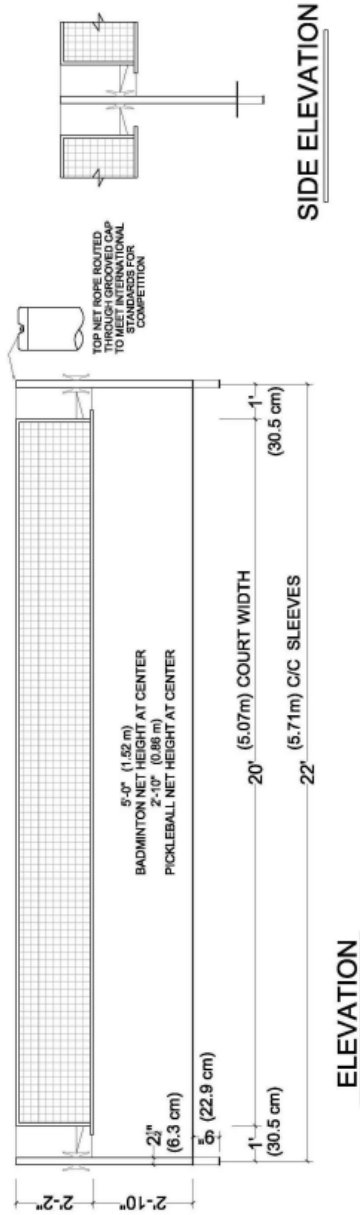
<b>CLIENT:-</b>	<b>CONSULTANT:-</b>	<b>PROJECT:-</b>	<b>TITLE:-</b>	<b>SCALE</b>
<b>BHIKKI POWER PLANT</b>		<b>AZ ENGINEERING ASSOCIATES</b> 207 SCOTCH CORNER UPPER MALL, LAHORE TEL:-042-35958641-42 FAX:- 042-35958643 email:- azeassociate@gmail.com	<b>CONSTRUCTION OF SPORTS COMPLEX AT BHIKKI POWER PLANT, SHEIKHU PURA.</b>	<b>BASKETBALL POST</b>
			Activate Windows Go to Settings to activate Windows.	DATE 29/08/2021 DRAWN BY:
				BC-A-02





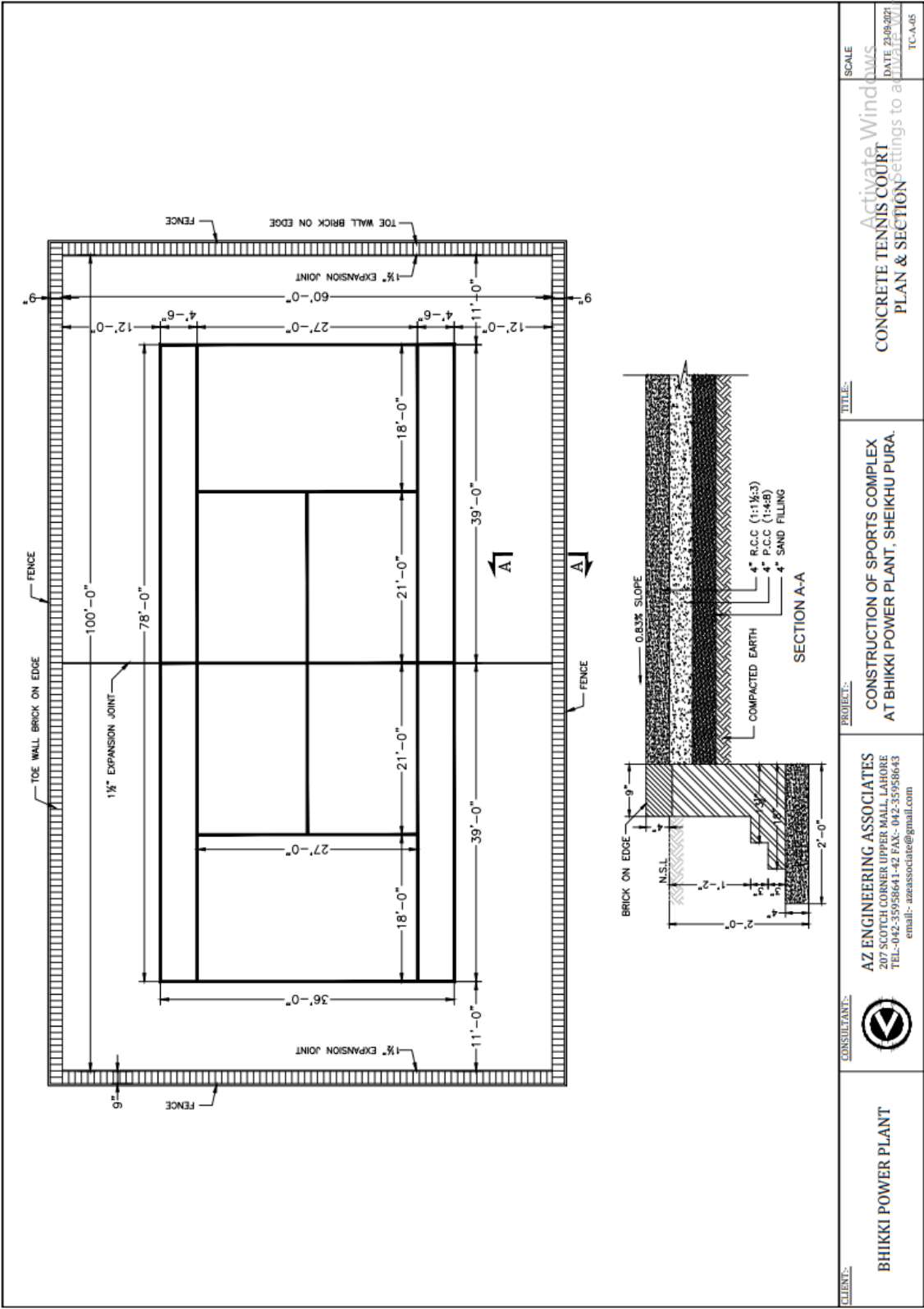


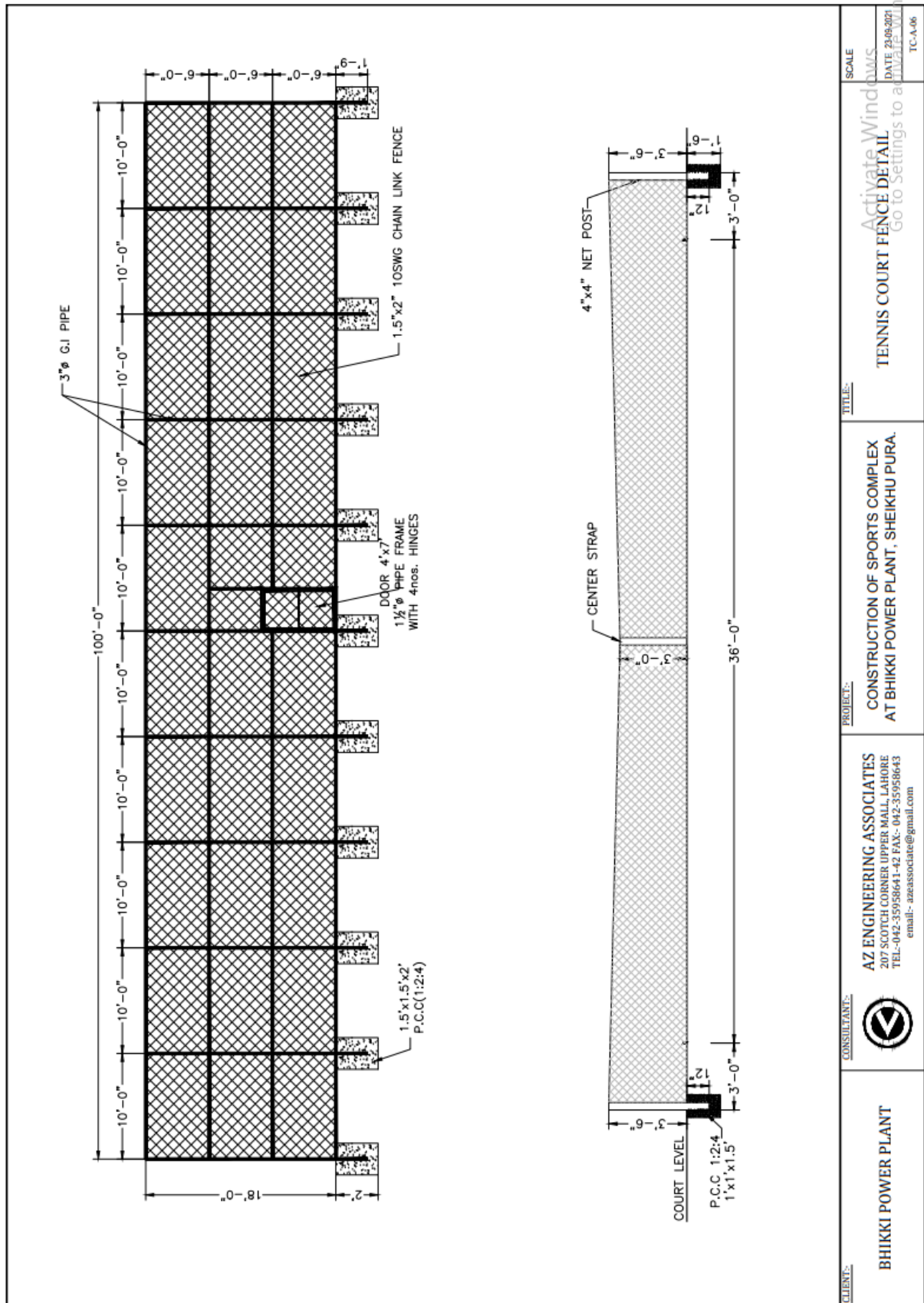
**3D IMAGE**



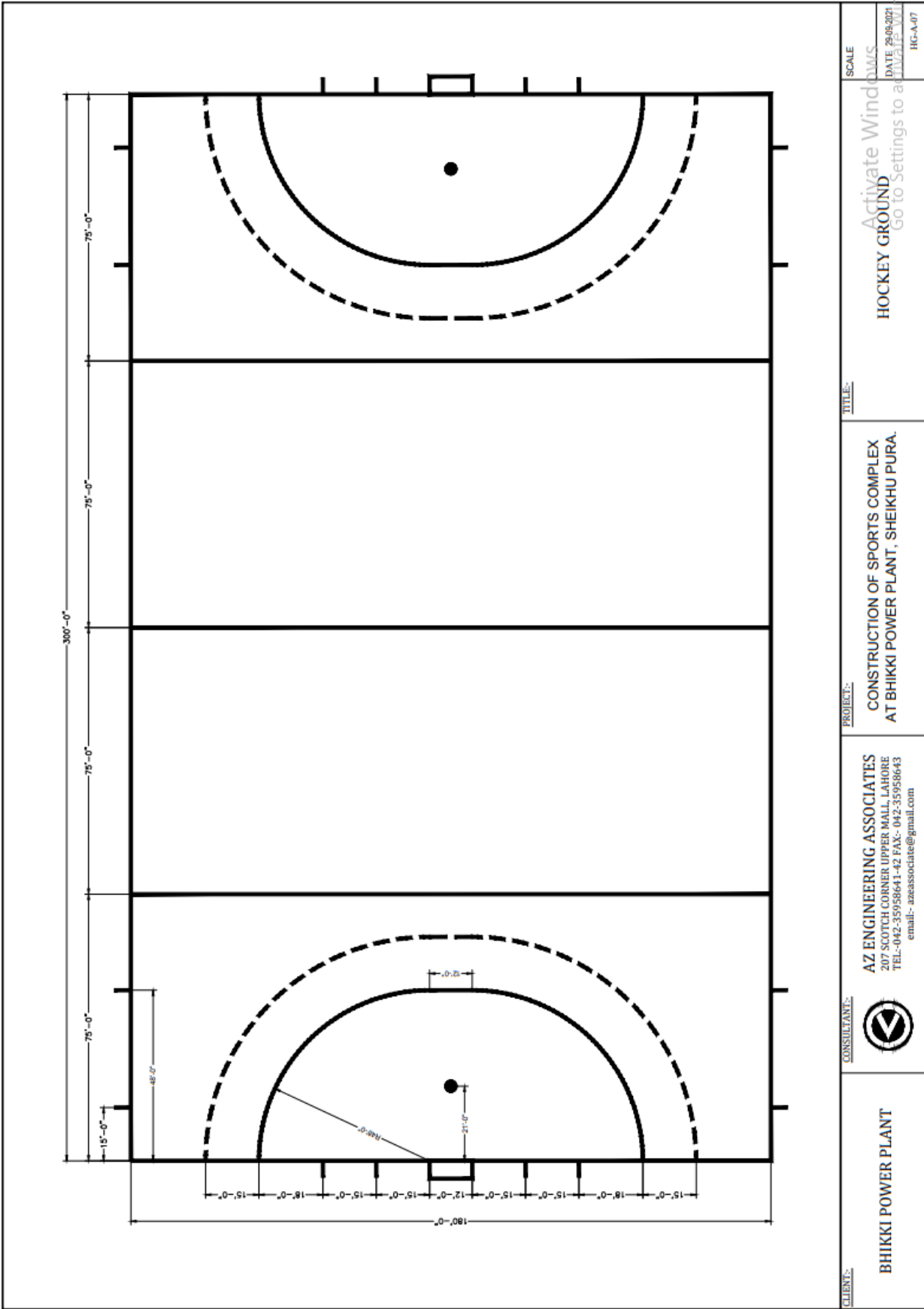
<b>CLIENT:-</b> <b>BHIKKI POWER PLANT</b>	<b>CONSULTANT:-</b> 	<b>PROJECT:-</b> <b>CONSTRUCTION OF SPORTS COMPLEX AT BHIKKI POWER PLANT, SHEIKHU PURA.</b>	<b>TITLE:-</b> <b>BADMINTON COURT DETAIL</b> <b>SCALE</b> <b>DATE 23/08/2021</b> <b>BY BM-A-04</b>
--	--	--	--

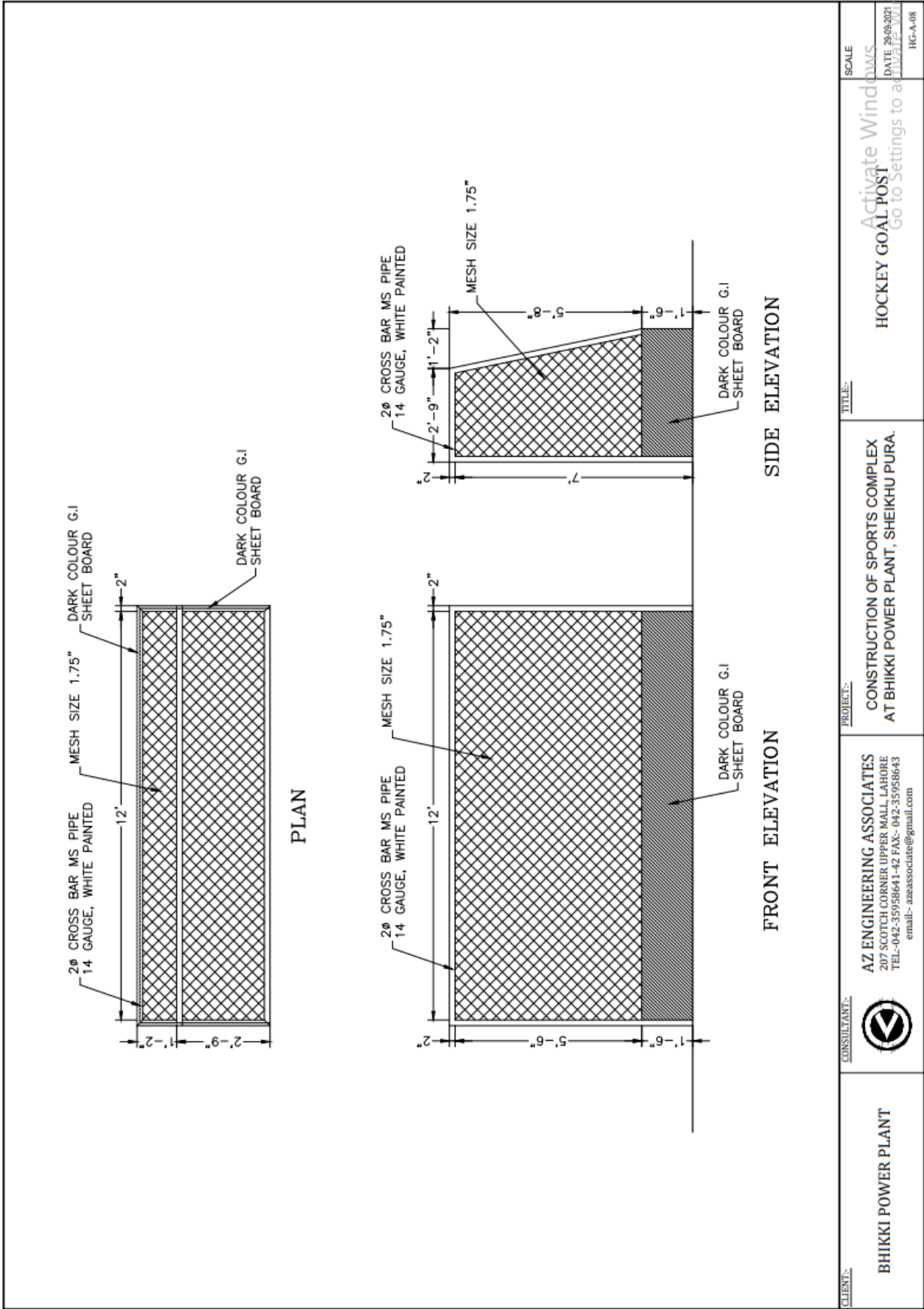
Activate Windows  
Go to Settings to activate Windows.



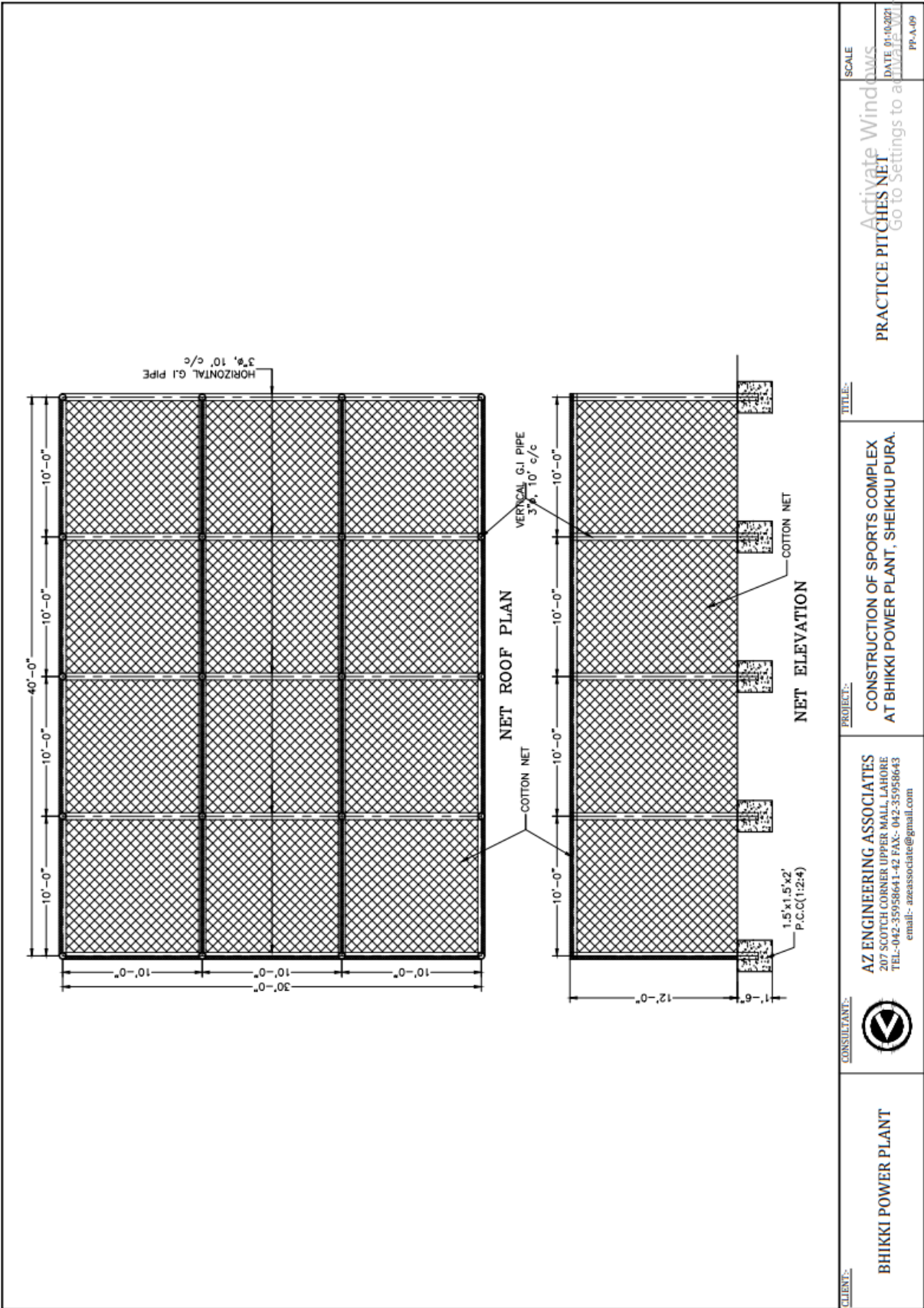


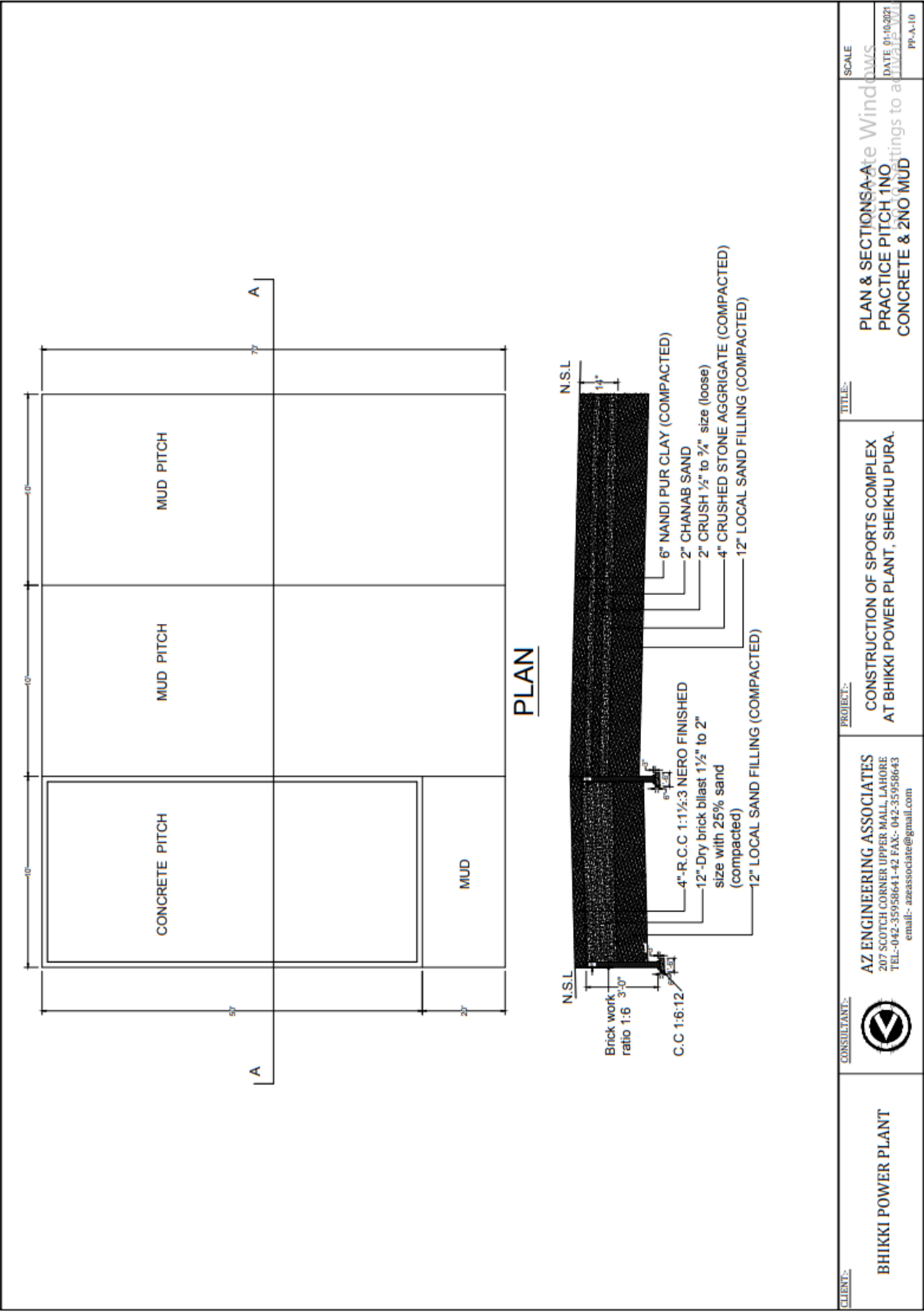
CLIENT:	BHIKKI POWER PLANT	CONSULTANT:	 <p><b>AZ ENGINEERING ASSOCIATES</b> 207 SCOTCH CORNER UPPER MALL, LAHORE TEL:-042-35958641-42 FAX:- 042-35958643 email:- azassociates@gmail.com</p>	PROJECT:	CONSTRUCTION OF SPORTS COMPLEX AT BHIKKI POWER PLANT, SHEIKHU PURA.	TITLE: TENNIS COURT FENCE DETAIL SCALE DATE 23-05-2021 TC-A-06
---------	--------------------	-------------	---	----------	--	--

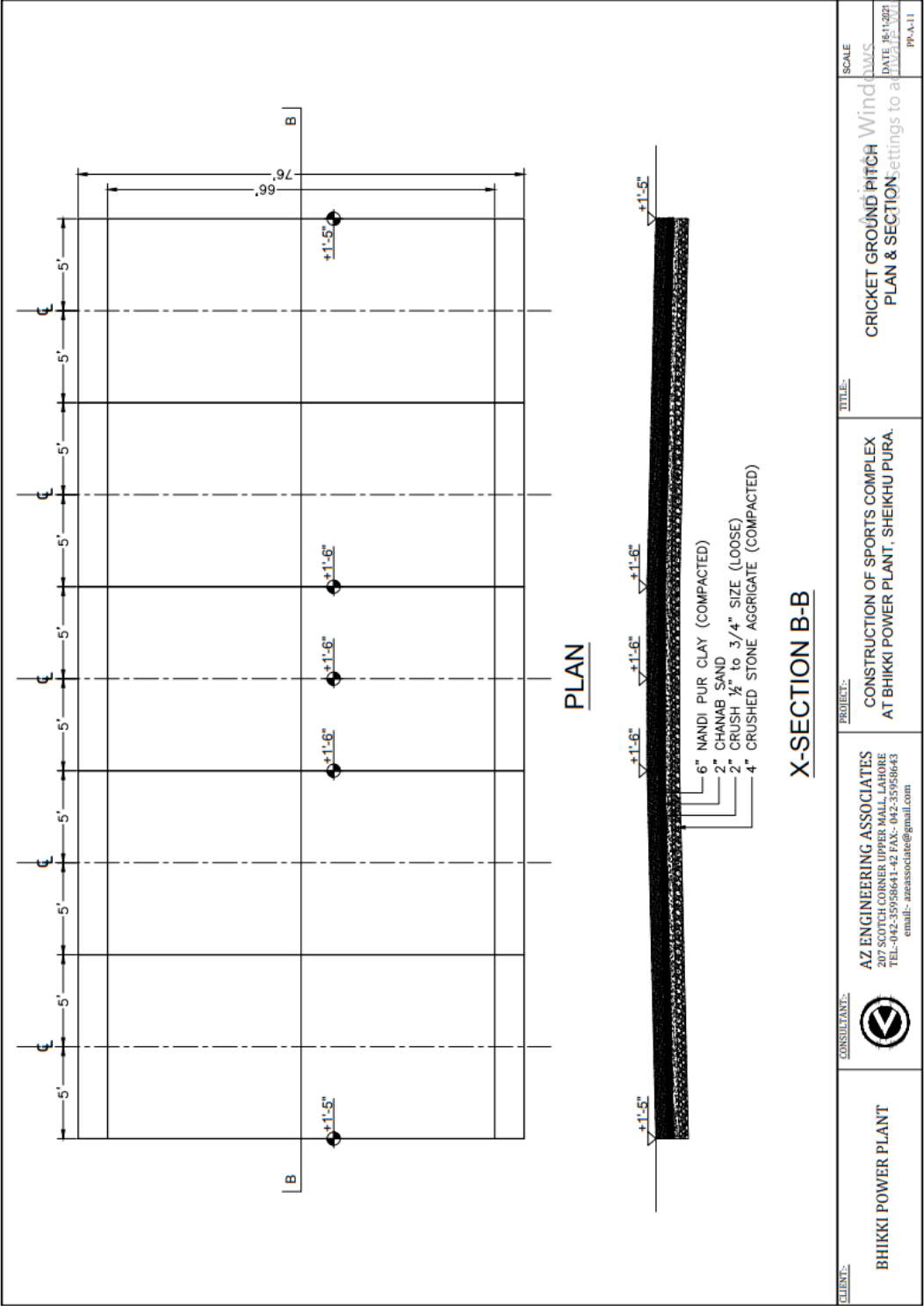




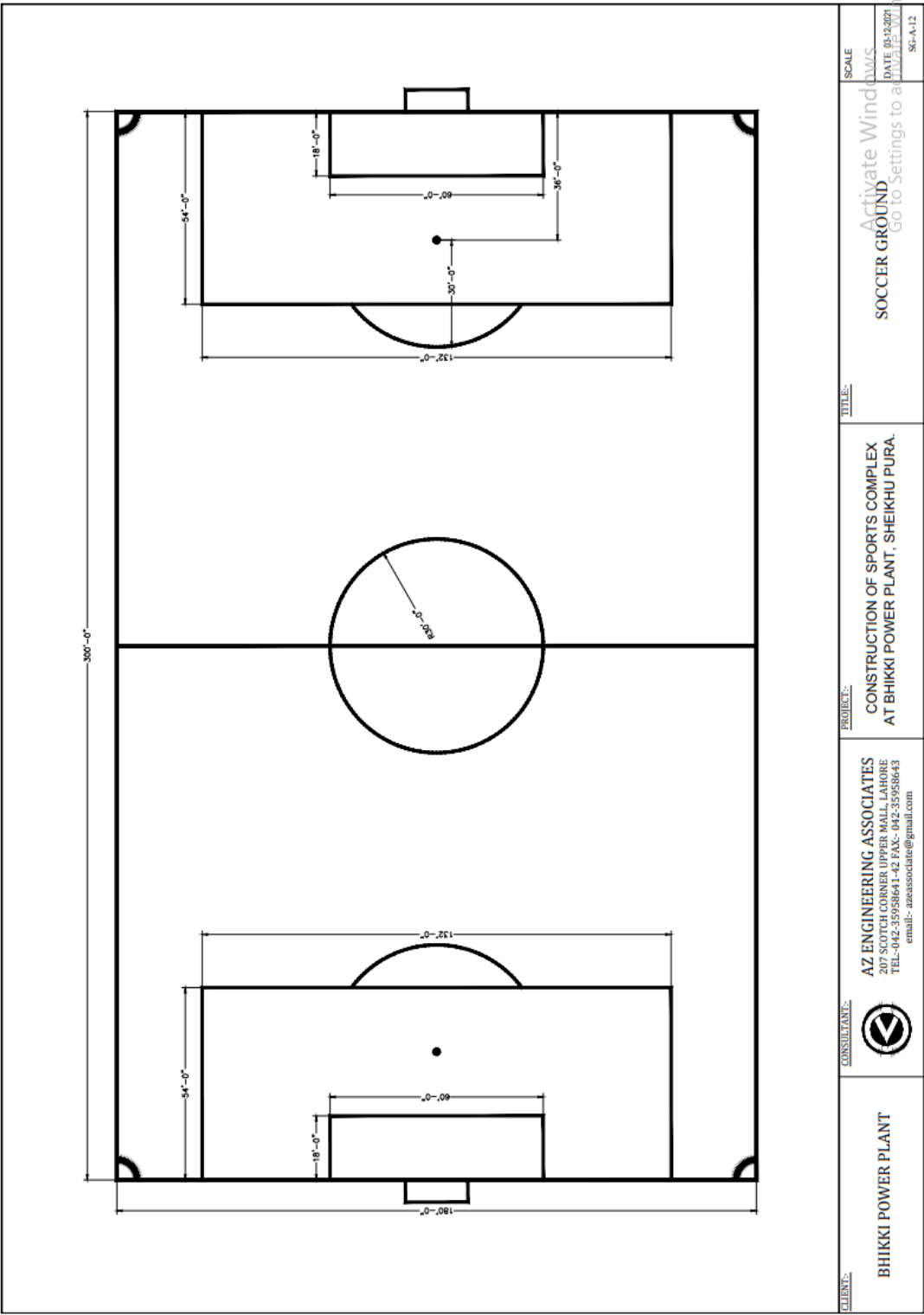


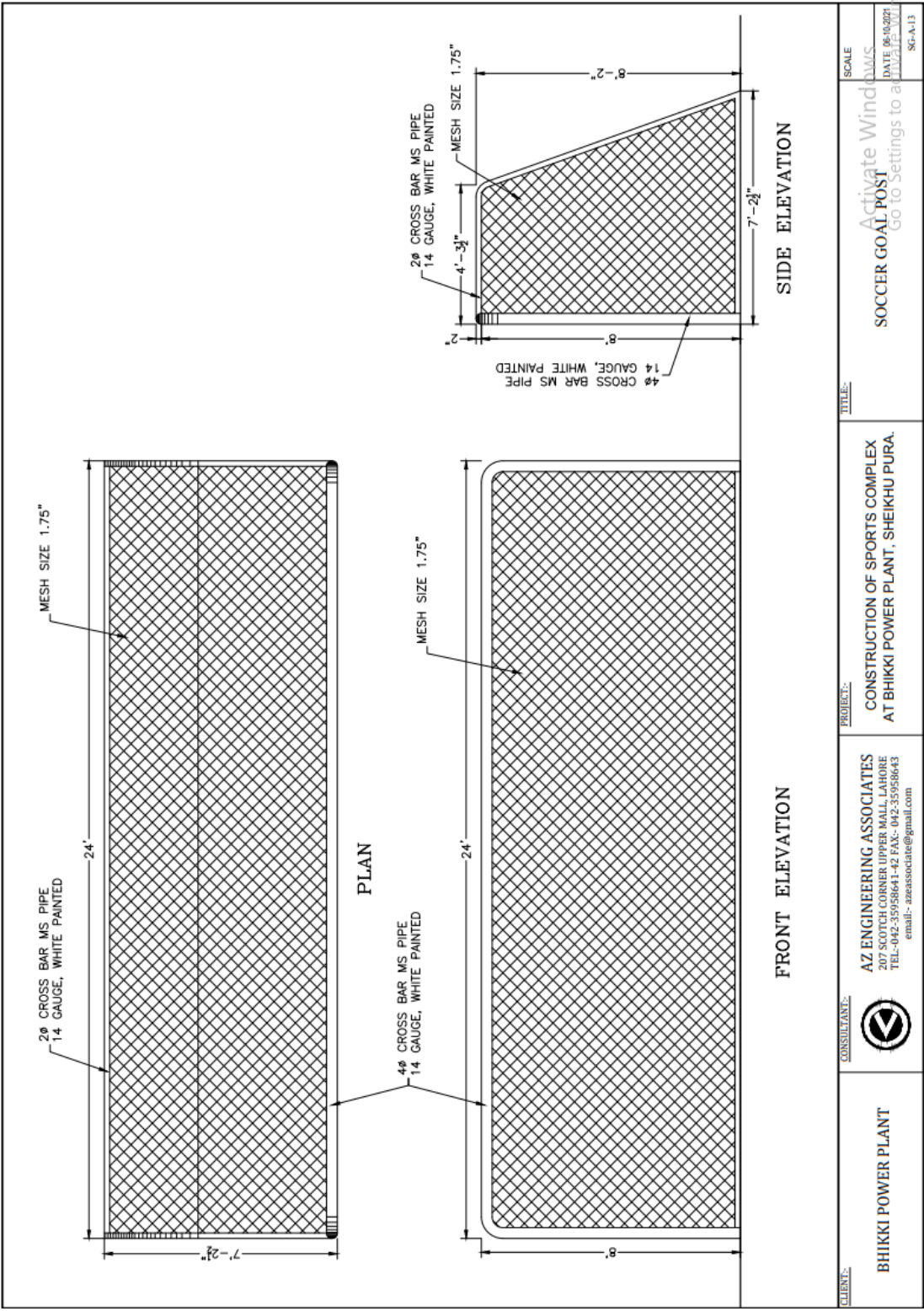


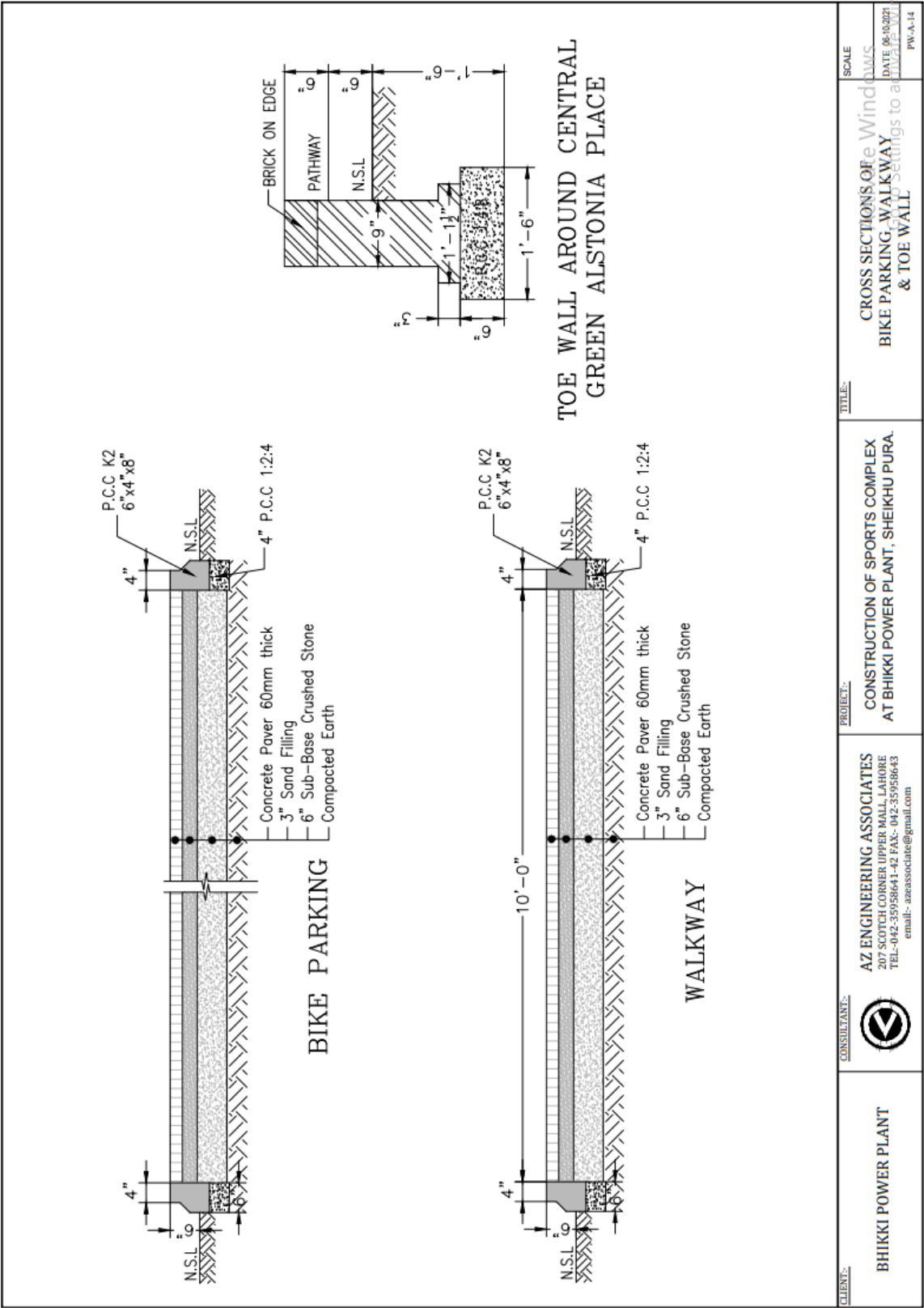




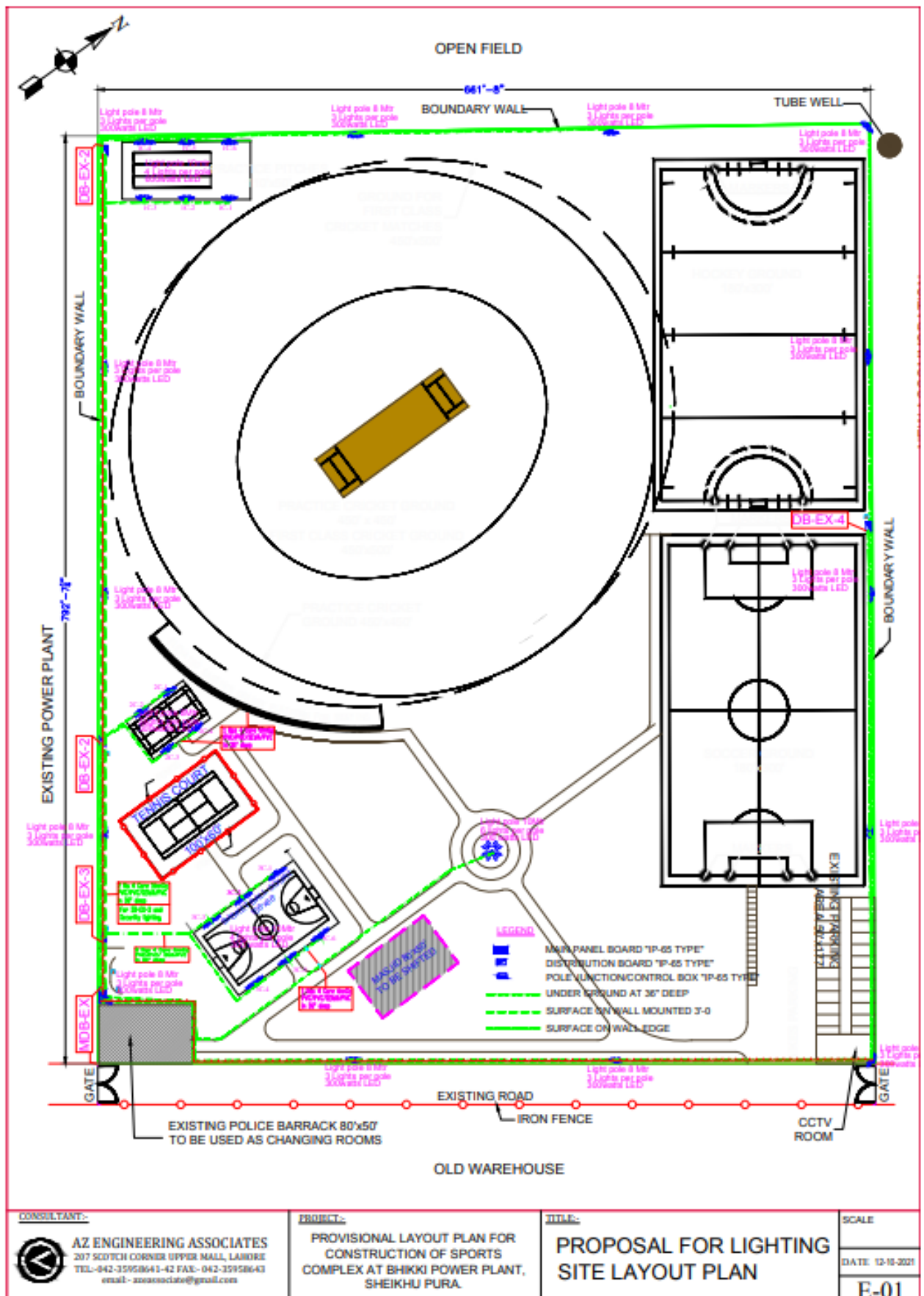


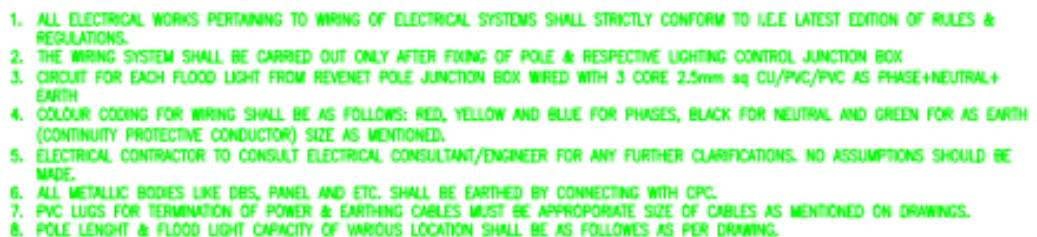







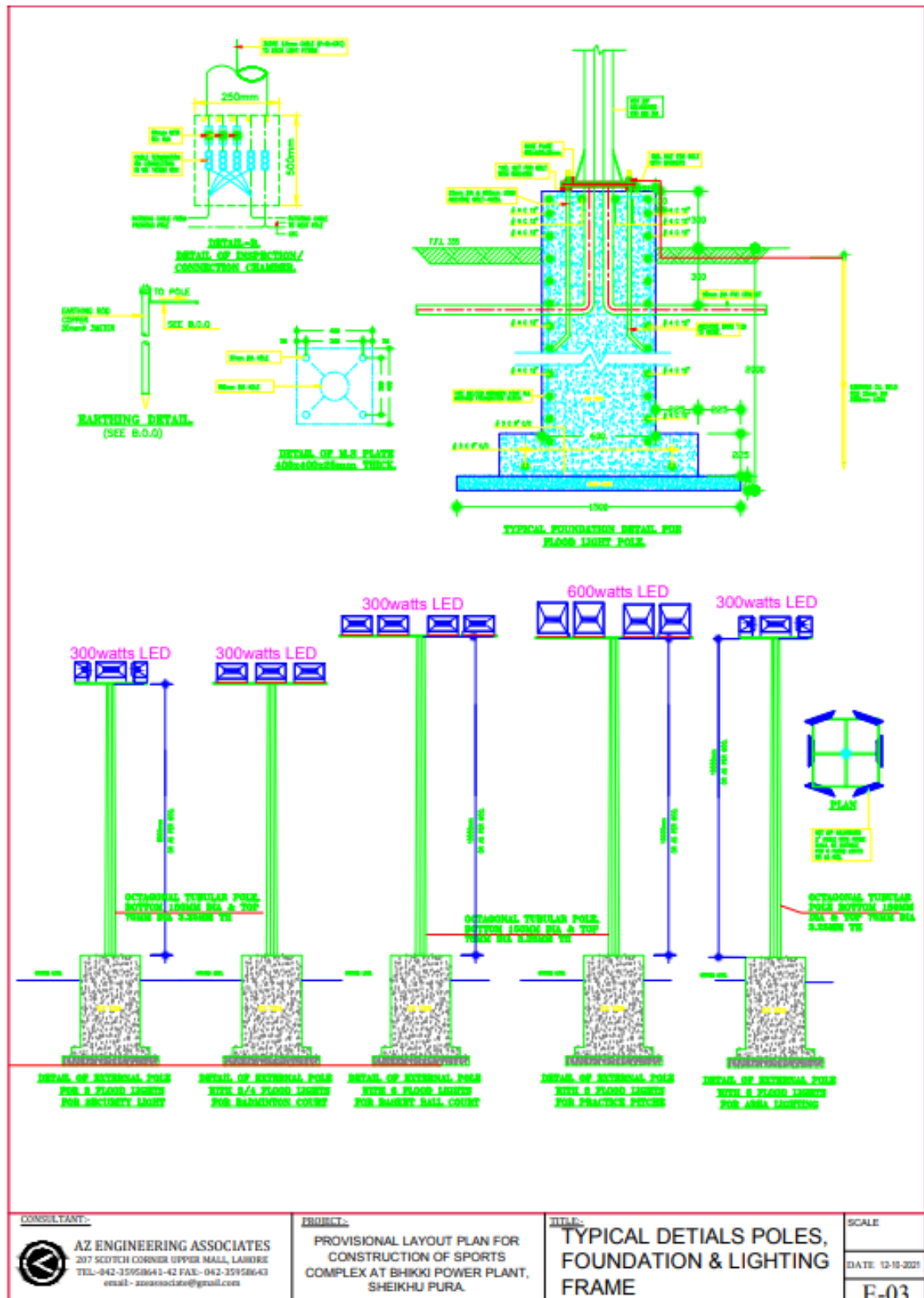
CLIENT:	CONSULTANT:	PROJECT:	TITLE:	SCALE:
BHIKKI POWER PLANT	AZ ENGINEERING ASSOCIATES 207 SCOTCH CORNER UPPER MALL, LAHORE TEL-042-35958641-42 FAX- 042-35958643 email- azassociates@gmail.com	CONSTRUCTION OF SPORTS COMPLEX AT BHIKKI POWER PLANT, SHEIKHU PURA.	CROSS SECTIONS OF BIKE PARKING, WALKWAY & TOE WALL	DATE 06/03/2021 DRAWN BY PW-A-14



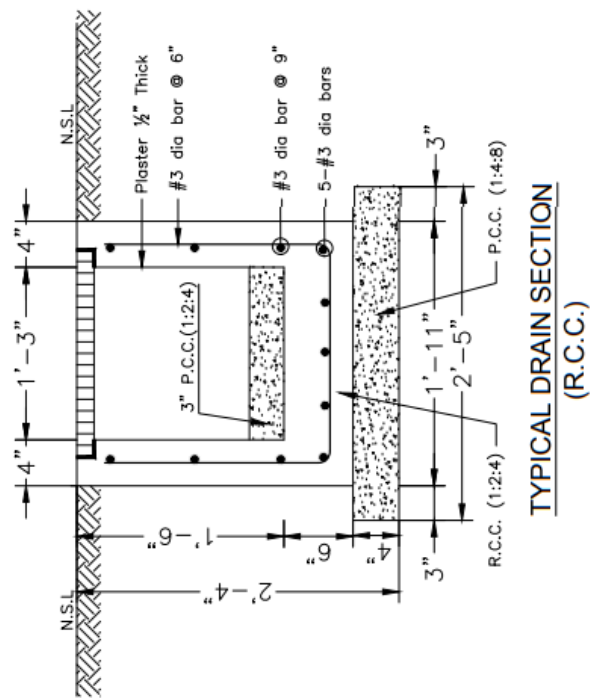


<b>CONSULTANT:-</b>  <b>AZ ENGINEERING ASSOCIATES</b> 207 SCOTCH CORNER UPPER MALL, LAHORE TEL:-042-35958641-42 FAX:-042-35958643 email - azassociate@gmail.com	<b>PROJECT:-</b> PROVISIONAL LAYOUT PLAN FOR CONSTRUCTION OF SPORTS COMPLEX AT BHIKKI POWER PLANT, SHEIKHU PURA.	<b>TITLE:-</b> <b>SINGLE LINE DIAGRAM</b>	<b>SCALE</b>  <b>DATE:</b> 12-10-2021  <b>E-02</b>
--	--	--	--

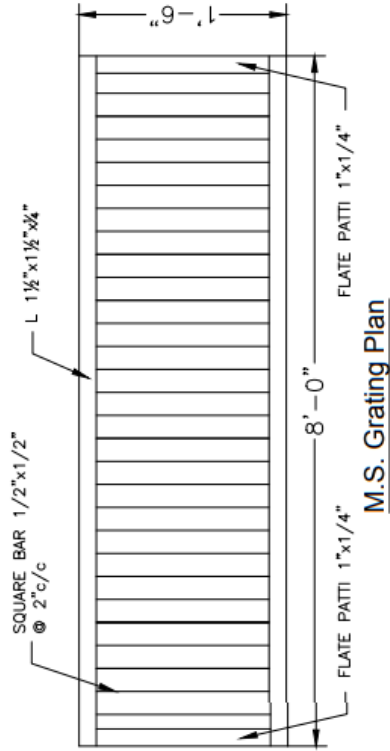








TYPICAL DRAIN SECTION  
(R.C.C.)



M.S. Grating Plan

CLIENT:	CONSULTANT:  AZ ENGINEERING ASSOCIATES 207 SCOTCH CORNER UPPER MALL, LAHORE TEL:-042-33958641-42 FAX:- 042-33958643 email:- azassociates@gmail.com	PROJECT: CONSTRUCTION OF SPORTS COMPLEX AT BHIKKI POWER PLANT, SHEIKHU PURA.	TITLE: TYPICAL DRAIN SECTION AND M.S GRATING SCALE Activate Windows DATE 16-11-2021 DRAWN BY PH-01
---------	--	--	---